

Proprietary data, company confidential.
All rights reserved

Als Betriebsgeheimnis anvertraut
Alle Rechte vorbehalten

1		2		3		4		5	
HIERARCHY				SHEET		PDF-SHEET			
A5B00900145331-12861				index		sheet 1			
				netlist1		sheet 2			
				poslist1		sheet 3			
				page1		---			
				sheet1		sheet 4			
				sheet2		sheet 5			
				sheet3		sheet 6			
				sheet4		sheet 7			
				sheet5		sheet 8			
				sheet6		sheet 9			
				sheet7		sheet 10			
				sheet8		sheet 11			
				sheet9		sheet 12			
				sheet10		sheet 13			
<div>Confidential</div> <div>Copyright © Siemens AG</div>									
				DATE	20.03.2003	R65-X-Cite V1			1:1
8	13427	07.06.2004	Nol	USER	Merk	B2.1 Layout HIT			
7	14596	29.04.2004	Nol	APPR'D		TOP HIERARCHY LEVEL			
6	14205	20.04.2004	Nol			SCHEMATIC			
5	13570	26.03.2004	Me	MP UC RD ED Ulm		68290			index
4	13452	22.03.2004	Me	Siemens AG					
3	13340	17.03.2004	Nol						
2	13223	12.03.2004	Nol						
VERS.	CHANGE NUMBER	DATE	NAME	(Created by BOM number: A5B00900146312-13427)					

Confidential
Copyright © Siemens AG

1.5V_DSP /sheet6 7 C /sheet7 8 B	AC_RTS /sheet5 13 E /sheet8 15 F	BOOST_OUT /sheet7 10 E /sheet7 6 C	/sheet3 1 C /sheet5 13 F /sheet8 8 F	/sheet4 13 D /sheet4 10 D /sheet5 6 B /sheet8 10 A	IR_AC_RX /sheet5 13 E /sheet9 10 E /sheet8 13 C	/sheet7 2 E	PM_I2S_CLK /sheet5 13 C /sheet7 3 F /sheet7 7 F	/sheet7 7 G /sheet7 6 G	RF_SIN26M /sheet4 2 C /sheet4 4 C /sheet5 1 E /sheet1 15 C	/sheet7 6 E	/sheet7 6 C /sheet7 10 C
1.5V_UC /sheet6 7 D /sheet6 2 C /sheet7 8 B	AC_RX /sheet5 13 E /sheet8 15 F	BREF /sheet5 10 B /sheet5 15 A	CKE /sheet6 10 E /sheet5 15 E /sheet5 7 G	DISPLAY_RS /sheet4 13 D /sheet4 10 D /sheet3 2 F /sheet8 10 A	IR_AC_SEL /sheet5 7 B /sheet9 14 E /sheet8 15 C	/sheet9 5 D /sheet9 6 D /sheet7 2 E	PM_I2S_DAC /sheet5 13 C /sheet7 3 F	RF_AFC /sheet4 4 B /sheet4 2 B /sheet5 1 E /sheet1 15 B	RF_STR /sheet4 2 A /sheet4 4 A /sheet5 7 B /sheet1 15 C	STEREO2_OUT /sheet8 9 E /sheet7 6 E	VCXOEN_UC /sheet5 1 E /sheet7 3 D
1.8V_CIF /sheet4 10 C /sheet4 13 C /sheet3 2 A /sheet8 10 B /sheet7 10 B	AC_TX /sheet5 13 E /sheet8 15 F	CAMERA_CLK /sheet3 13 C /sheet3 3 C	CLK32 /sheet3 7 E /sheet5 5 B	DVDD_CAMERA /sheet3 15 D /sheet3 6 F /sheet3 13 C	IR_AC_TX /sheet5 13 E /sheet9 14 E /sheet8 13 C	MICBIAS_F /sheet9 5 D /sheet8 5 F /sheet7 8 E	PM_I2S_WA0 /sheet5 13 C /sheet7 7 F /sheet7 3 F	RF_ANT_DET /sheet4 2 D /sheet4 4 D /sheet2 7 D /sheet5 6 A	RF_TXONPA /sheet4 2 D /sheet4 4 D /sheet5 5 B /sheet1 1 F	TBAT /sheet5 9 B /sheet5 13 A	VDD_AFC /sheet6 4 B /sheet7 8 C
1.8V_MEM1 /sheet6 7 E /sheet6 13 F /sheet7 8 B	ADV /sheet6 15 E /sheet6 12 A /sheet5 6 G	CAMERA_DATA_CLK /sheet3 3 D /sheet3 13 B	CS3 /sheet6 15 F /sheet5 7 G	EXTBOOST_EN /sheet7 11 C /sheet7 8 D	KB_ON_OFF /sheet9 9 B /sheet7 2 C	MICEA /sheet8 6 G /sheet8 9 E /sheet7 2 E	PM_INT /sheet5 13 D /sheet7 7 F	RF_BAND_SW /sheet4 2 F /sheet4 4 F /sheet5 6 B /sheet1 6 F	RTS /sheet8 12 F /sheet8 9 E	TX /sheet8 12 F /sheet8 11 E /sheet8 9 E	VDD_BRIGHT /sheet2 9 D /sheet1 7 C /sheet1 9 A /sheet1 9 B /sheet1 9 F /sheet1 9 A /sheet1 8 E /sheet1 8 B
1.8V_MEM2 /sheet6 12 B /sheet6 11 A /sheet6 8 A /sheet6 9 B /sheet7 8 B /sheet7 7 D /sheet7 10 B	AKKU_TYP /sheet5 13 A /sheet8 3 B	CAMERA_HSYNC /sheet3 3 C /sheet3 13 C	CS_FLASH /sheet6 12 A /sheet5 7 G	FLASH_EN /sheet7 11 C /sheet7 8 D	KP_IN0 /sheet5 5 G /sheet9 9 B /sheet9 13 B	MICEB /sheet8 6 F /sheet8 9 F /sheet7 2 E	PM_RESET_1.8V /sheet6 12 B /sheet7 7 C	RF_CLK /sheet4 4 A /sheet7 6 E /sheet5 7 B /sheet1 15 C	RX /sheet8 12 F /sheet8 9 E	TX_GSM_OUT /sheet1 1 C /sheet1 6 F	VDD_BT /sheet7 8 C
2.65V /sheet6 4 B /sheet6 7 D /sheet6 5 B /sheet6 2 C /sheet6 4 B /sheet5 10 A /sheet5 15 D /sheet5 3 F /page1 2 B /sheet9 10 F /sheet8 14 C /sheet8 14 E /sheet8 3 B /sheet8 10 G /sheet8 14 B /sheet7 3 D /sheet7 8 B	AVDD_CAMERA /sheet3 15 D /sheet3 13 C	CAMERA_I2C_CLK /sheet3 13 C /sheet3 8 E	CS_FLASH1 /sheet6 15 F /sheet6 12 A /sheet5 7 G	FLASH_RESET /sheet6 12 A /sheet5 3 E	KP_IN1 /sheet5 5 G /sheet9 9 B /sheet9 14 B /sheet7 6 C	MONO1_LP_OUT /sheet7 6 E /sheet7 3 E	PM_RESET_N /sheet5 3 E /sheet7 7 C	RF_DAT /sheet4 4 A /sheet4 2 A /sheet5 7 B /sheet1 15 C	SDCLKI /sheet6 15 E /sheet6 8 D /sheet5 6 G	TX_PCN_OUT /sheet1 1 C /sheet1 6 F	VDD_CHARGE /sheet7 3 D /sheet7 9 G
2.9V /sheet6 2 B /sheet4 10 C /sheet4 13 C /sheet3 7 B /sheet9 8 C /sheet8 10 B /sheet7 8 B /sheet10 12 A	BATT+ /sheet4 10 E /sheet4 13 E /sheet3 11 D /sheet5 15 B /sheet1 6 E /sheet1 1 E /sheet8 4 B /sheet7 11 F /sheet7 3 E /sheet7 11 A /sheet7 2 B /sheet10 11 A	CAMERA_VSYNC /sheet3 13 B /sheet3 1 C	CS_SDRAM /sheet6 12 D /sheet6 15 F /sheet5 7 G	GND_MIC /sheet9 4 E /sheet8 9 E /sheet7 7 H /sheet7 7 E	KP_IN2 /sheet5 5 G /sheet9 9 B /sheet9 13 B	MONO2_LP_OUT /sheet7 6 E /sheet7 3 E	PM_RINGIN /sheet5 11 B /sheet7 3 E	RF_FE_DTR_DCS /sheet4 2 C /sheet4 4 C /sheet6 6 B /sheet1 1 C	SDCLKO /sheet6 15 E /sheet6 8 E /sheet5 6 G	USB_D+ /sheet5 13 C /sheet8 15 F	VDD_RF1 /sheet4 4 E /sheet4 2 E /sheet1 8 F /sheet1 11 A /sheet7 8 C
2.9V_CIF /sheet3 6 D /sheet3 3 E /sheet3 3 E /sheet3 3 A /sheet3 8 B /sheet3 6 D	BATT+_F /sheet9 4 B /sheet9 8 B /sheet9 14 E /sheet8 11 D /sheet8 12 D /sheet8 14 A /sheet7 3 C /sheet7 2 B /sheet7 2 F /sheet7 10 A /sheet7 3 C /sheet7 3 C /sheet7 3 A /sheet7 3 B	CAM_SENSOR_PD /sheet3 10 D /sheet3 7 E	CAS /sheet6 12 E /sheet6 15 E /sheet5 6 G	DB_RTCK /sheet5 3 D	KP_IN3 /sheet5 5 G /sheet9 9 B /sheet9 13 B	MONO2_OUT /sheet9 6 G /sheet7 8 E	PM_RTC_INT /sheet5 3 E /sheet7 3 C	RF_FE_DTR_GSM /sheet4 4 C /sheet4 2 C /sheet5 6 B /sheet1 1 C	SENSE_IN1 /sheet7 3 D /sheet7 11 F	USB_D- /sheet5 13 C /sheet8 15 F	VDD_RF2 /sheet4 2 E /sheet4 4 E /sheet1 7 A /sheet7 8 C
A(0:24) /sheet6 15 E /sheet6 10 D /sheet6 8 F /sheet5 12 G	BATT+_F1 /sheet7 9 D /sheet7 2 B /sheet10 2 B /sheet10 12 A	CAM_SENSOR_RESET /sheet3 13 C /sheet3 7 E	D(0:15) /sheet6 15 B /sheet6 11 C /sheet6 12 E /sheet5 9 G	HF_OUT /sheet2 4 C /sheet1 1 D	KP_IN4 /sheet5 3 F /sheet9 9 B /sheet9 14 B	PCN_PA_IN /sheet1 1 F /sheet1 9 F	PM_SSC_CS /sheet5 6 B /sheet7 4 F	RF_FE_DTR_GSM /sheet4 4 C /sheet4 2 C /sheet5 6 B /sheet1 1 C	SENSE_IN2 /sheet7 3 D /sheet7 11 F	USB_MODE /sheet8 15 D /sheet7 8 B	VDD_RTC /sheet6 2 B /sheet7 2 C /sheet7 8 B
AC_CLIPIT_DIR /sheet5 3 F /sheet8 13 C	BC0 /sheet6 10 D /sheet6 15 E /sheet5 7 G	CHARGE_CNTRL /sheet7 10 H /sheet7 6 D	DB_TCK /sheet5 3 C /page1 4 C	HW_DET_BAND_SEL /sheet5 3 D /sheet5 2 G	KP_OUT0 /sheet5 3 F /sheet9 9 B	PIXEL_DATA0 /sheet3 3 C /sheet3 13 B	PM_SSC_MRST /sheet5 13 D /sheet7 6 F	RF_I /sheet4 2 B /sheet4 4 B /sheet5 8 B /sheet1 15 D	SIM_CLK /sheet5 11 B /sheet10 7 E	VAUDREGA /sheet7 3 E /sheet7 8 C /sheet7 3 C	VDD_SIM /sheet7 8 B /sheet10 7 E
AC_CLIPIT_DIR /sheet5 3 F /sheet8 13 C	BC1 /sheet6 10 D /sheet6 15 E /sheet5 7 G	CHARGE_SOURCE /sheet7 10 H /sheet7 6 D	DB_TDI /sheet5 3 C /page1 4 B	HW_DET_EXT_STEPUP /sheet5 2 G /sheet5 3 D	KP_OUT1 /sheet5 3 F /sheet9 9 B	PIXEL_DATA1 /sheet3 3 C /sheet3 13 B	PM_SSC_SCLK /sheet5 13 D /sheet7 4 F	RF_IX /sheet4 2 B /sheet4 4 B /sheet5 8 B /sheet1 15 D	SIM_IO /sheet5 11 B /sheet10 7 E	VBOOST /sheet4 10 D /sheet4 13 D /sheet9 8 C /sheet8 10 B /sheet7 11 D	VDD_VIBRA /sheet9 2 B /sheet7 8 B
AC_CTS /sheet5 13 E /sheet8 15 F	BC0 /sheet6 10 D /sheet6 15 E /sheet5 7 G	CIF_CLK /sheet3 7 D /sheet5 3 C	DB_TMS /sheet5 3 C /page1 4 B	HW_DET_MOB_TYPE1 /sheet5 2 F /sheet5 3 D	KP_OUT2 /sheet5 3 E /sheet9 9 B	PIXEL_DATA2 /sheet3 3 C /sheet3 13 B	PM_WADOG /sheet5 5 B /sheet7 3 D	RF_QX /sheet4 4 B /sheet4 2 B /sheet5 8 B /sheet1 15 D	SIM_RST /sheet5 11 B /sheet10 7 E	VBOOST_FB /sheet7 3 C /sheet7 9 D	WAIT /sheet6 15 E /sheet6 13 B /sheet5 6 G
AC_DCD /sheet5 5 B /sheet8 15 F /sheet8 8 G	BFCLKI /sheet6 15 E /sheet6 13 B /sheet5 6 G	CIF_CS_DISPLAY /sheet3 7 C /sheet5 7 B	DB_TRST /sheet5 3 C /page1 4 C	HW_DET_MOB_TYPE2 /sheet5 2 F /sheet5 3 D	KP_OUT3 /sheet5 3 E /sheet9 13 B	PIXEL_DATA3 /sheet3 3 C /sheet3 13 B	POWER /sheet8 9 E /sheet8 9 E /sheet7 9 F /sheet7 8 F	RF_RAMP1 /sheet4 2 C /sheet4 4 C /sheet5 7 A /sheet1 1 F	STEPDOWN_GND /sheet7 11 C /sheet7 6 F /sheet7 10 C /sheet7 10 C /sheet7 3 B	VBUCK /sheet7 11 C /sheet7 2 B	WR /sheet6 12 D /sheet6 12 A /sheet5 7 G
	BFCLKO /sheet6 15 E /sheet6 13 B /sheet5 6 G	CIF_CS_DISPLAY /sheet3 7 C /sheet5 7 B	DISC /sheet8 9 E /sheet8 12 F	HW_DET_MOB_TYPE3 /sheet5 2 F /sheet5 3 D	LIGHT_DISP /sheet4 13 D /sheet4 10 D /sheet8 10 B /sheet10 6 B	PIXEL_DATA4 /sheet3 3 C /sheet3 13 B	RAS /sheet6 12 E /sheet6 15 E /sheet5 6 G	REF_GND /sheet7 2 B	STEREO1_OUT /sheet8 9 E	VBUCK_LX	
		CIF_CS_DISPLAY /sheet3 7 C /sheet5 7 B	DISC /sheet8 9 E /sheet8 12 F	HW_DET_MOB_TYPE4 /sheet5 2 F /sheet5 3 D	LIGHT_KP /sheet9 9 B /sheet10 6 C	PIXEL_DATA5 /sheet3 3 C /sheet3 13 B	RD /sheet6 12 A /sheet5 7 G				
		CIF_CS_DISPLAY /sheet3 7 C /sheet5 7 B	DISC /sheet8 9 E /sheet8 12 F	HW_DET_MOB_TYPE5 /sheet5 2 F /sheet5 3 D	LIGHT_PWM1 /sheet7 6 D /sheet10 2 A	PIXEL_DATA6 /sheet3 3 C /sheet3 13 C					
		CIF_CS_DISPLAY /sheet3 7 C /sheet5 7 B	DISC /sheet8 9 E /sheet8 12 F	HW_DET_MOB_TYPE6 /sheet5 2 F /sheet5 3 D	LIGHT_PWM2 /sheet7 6 D /sheet10 2 C	PIXEL_DATA7 /sheet3 3 C /sheet3 13 C					
		CIF_CS_DISPLAY /sheet3 7 C /sheet5 7 B	DISC /sheet8 9 E /sheet8 12 F	HW_DET_MOB_TYPE7 /sheet5 2 F /sheet5 3 D	LIGHT_PWM3 /sheet5 13 D /sheet10 8 C	PM_CHARGE_UC /sheet5 5 B /sheet7 3 D					
		CIF_CS_DISPLAY /sheet3 7 C /sheet5 7 B	DISC /sheet8 9 E /sheet8 12 F	HW_DET_MOB_TYPE8 /sheet5 2 F /sheet5 3 D	LIGHT_PWM4 /sheet5 13 D /sheet10 8 C	PM_I2S_ADC /sheet5 13 C /sheet7 7 F					
		CIF_CS_DISPLAY /sheet3 7 C /sheet5 7 B	DISC /sheet8 9 E /sheet8 12 F	HW_DET_MOB_TYPE9 /sheet5 2 F /sheet5 3 D	LIGHT_PWM5 /sheet5 13 D /sheet10 8 C						
		CIF_CS_DISPLAY /sheet3 7 C /sheet5 7 B	DISC /sheet8 9 E /sheet8 12 F	HW_DET_MOB_TYPE10 /sheet5 2 F /sheet5 3 D	LIGHT_PWM6 /sheet5 13 D /sheet10 8 C						
		CIF_CS_DISPLAY /sheet3 7 C /sheet5 7 B	DISC /sheet8 9 E /sheet8 12 F	HW_DET_MOB_TYPE11 /sheet5 2 F /sheet5 3 D	LIGHT_PWM7 /sheet5 13 D /sheet10 8 C						
		CIF_CS_DISPLAY /sheet3 7 C /sheet5 7 B	DISC /sheet8 9 E /sheet8 12 F	HW_DET_MOB_TYPE12 /sheet5 2 F /sheet5 3 D	LIGHT_PWM8 /sheet5 13 D /sheet10 8 C						
		CIF_CS_DISPLAY /sheet3 7 C /sheet5 7 B	DISC /sheet8 9 E /sheet8 12 F	HW_DET_MOB_TYPE13 /sheet5 2 F /sheet5 3 D	LIGHT_PWM9 /sheet5 13 D /sheet10 8 C						
		CIF_CS_DISPLAY /sheet3 7 C /sheet5 7 B	DISC /sheet8 9 E /sheet8 12 F	HW_DET_MOB_TYPE14 /sheet5 2 F /sheet5 3 D	LIGHT_PWM10 /sheet5 13 D /sheet10 8 C						
		CIF_CS_DISPLAY /sheet3 7 C /sheet5 7 B	DISC /sheet8 9 E /sheet8 12 F	HW_DET_MOB_TYPE15 /sheet5 2 F /sheet5 3 D	LIGHT_PWM11 /sheet5 13 D /sheet10 8 C						
		CIF_CS_DISPLAY /sheet3 7 C /sheet5 7 B	DISC /sheet8 9 E /sheet8 12 F	HW_DET_MOB_TYPE16 /sheet5 2 F /sheet5 3 D	LIGHT_PWM12 /sheet5 13 D /sheet10 8 C						
		CIF_CS_DISPLAY /sheet3 7 C /sheet5 7 B	DISC /sheet8 9 E /sheet8 12 F	HW_DET_MOB_TYPE17 /sheet5 2 F /sheet5 3 D	LIGHT_PWM13 /sheet5 13 D /sheet10 8 C						
		CIF_CS_DISPLAY /sheet3 7 C /sheet5 7 B	DISC /sheet8 9 E /sheet8 12 F	HW_DET_MOB_TYPE18 /sheet5 2 F /sheet5 3 D	LIGHT_PWM14 /sheet5 13 D /sheet10 8 C						
		CIF_CS_DISPLAY /sheet3 7 C /sheet5 7 B	DISC /sheet8 9 E /sheet8 12 F	HW_DET_MOB_TYPE19 /sheet5 2 F /sheet5 3 D	LIGHT_PWM15 /sheet5 13 D /sheet10 8 C						
		CIF_CS_DISPLAY /sheet3 7 C /sheet5 7 B	DISC /sheet8 9 E /sheet8 12 F	HW_DET_MOB_TYPE20 /sheet5 2 F /sheet5 3 D	LIGHT_PWM16 /sheet5 13 D /sheet10 8 C						
		CIF_CS_DISPLAY /sheet3 7 C /sheet5 7 B	DISC /sheet8 9 E /sheet8 12 F	HW_DET_MOB_TYPE21 /sheet5 2 F /sheet5 3 D	LIGHT_PWM17 /sheet5 13 D /sheet10 8 C						
		CIF_CS_DISPLAY /sheet3 7 C /sheet5 7 B	DISC /sheet8 9 E /sheet8 12 F	HW_DET_MOB_TYPE22 /sheet5 2 F /sheet5 3 D	LIGHT_PWM18 /sheet5 13 D /sheet10 8 C						
		CIF_CS_DISPLAY /sheet3 7 C /sheet5 7 B	DISC /sheet8 9 E /sheet8 12 F	HW_DET_MOB_TYPE23 /sheet5 2 F /sheet5 3 D	LIGHT_PWM19 /sheet5 13 D /sheet10 8 C						
		CIF_CS_DISPLAY /sheet3 7 C /sheet5 7 B	DISC /sheet8 9 E /sheet8 12 F	HW_DET_MOB_TYPE24 /sheet5 2 F /sheet5 3 D	LIGHT_PWM20 /sheet5 13 D /sheet10 8 C						
		CIF_CS_DISPLAY /sheet3 7 C /sheet5 7 B	DISC /sheet8 9 E /sheet8 12 F	HW_DET_MOB_TYPE25 /sheet5 2 F /sheet5 3 D	LIGHT_PWM21 /sheet5 13 D /sheet10 8 C						
		CIF_CS_DISPLAY /sheet3 7 C /sheet5 7 B	DISC /sheet8 9 E /sheet8 12 F	HW_DET_MOB_TYPE26 /sheet5 2 F /sheet5 3 D	LIGHT_PWM22 /sheet5 13 D /sheet10 8 C						
		CIF_CS_DISPLAY /sheet3 7 C /sheet5 7 B	DISC /sheet8 9 E /sheet8 12 F	HW_DET_MOB_TYPE27 /sheet5 2 F /sheet5 3 D	LIGHT_PWM23 /sheet5 13 D /sheet10 8 C						
		CIF_CS_DISPLAY /sheet3 7 C /sheet5 7 B	DISC /sheet8 9 E /sheet8 12 F	HW_DET_MOB_TYPE28 /sheet5 2 F /sheet5 3 D	LIGHT_PWM24 /sheet5 13 D /sheet10 8 C						
		CIF_CS_DISPLAY /sheet3 7 C /sheet5 7 B	DISC /sheet8 9 E /sheet8 12 F	HW_DET_MOB_TYPE29 /sheet5 2 F /sheet5 3 D	LIGHT_PWM25 /sheet5 13 D /sheet10 8 C						
		CIF_CS_DISPLAY /sheet3 7 C /sheet5 7 B	DISC /sheet8 9 E /sheet8 12 F	HW_DET_MOB_TYPE30 /sheet5 2 F /sheet5 3 D	LIGHT_PWM26 /sheet5 13 D /sheet10 8 C						
		CIF_CS_DISPLAY /sheet3 7 C /sheet5 7 B	DISC /sheet8 9 E /sheet8 12 F	HW_DET_MOB_TYPE31 /sheet5 2 F /sheet5 3 D	LIGHT_PWM27 /sheet5 13 D /sheet10 8 C						
		CIF_CS_DISPLAY /sheet3 7 C /sheet5 7 B	DISC /sheet8 9 E /sheet8 12 F	HW_DET_MOB_TYPE32 /sheet5 2 F /sheet5 3 D	LIGHT_PWM28 /sheet5 13 D /sheet10 8 C						
		CIF_CS_DISPLAY /sheet3 7 C /sheet5 7 B	DISC /sheet8 9 E /sheet8 12 F	HW_DET_MOB_TYPE33 /sheet5 2 F /sheet5 3 D	LIGHT_PWM29 /sheet5 13 D /sheet10 8 C						
		CIF_CS_DISPLAY /sheet3 7 C /sheet5 7 B	DISC /sheet8 9 E /sheet8 12 F	HW_DET_MOB_TYPE34 /sheet5 2 F /sheet5 3 D	LIGHT_PWM30 /sheet5 13 D /sheet10 8 C						
		CIF_CS_DISPLAY /sheet3 7 C /sheet5 7 B	DISC /sheet8 9 E /sheet8 12 F	HW_DET_MOB_TYPE35 /sheet5 2 F /sheet5 3 D	LIGHT_PWM31 /sheet5 13 D /sheet10 8 C						
		CIF_CS_DISPLAY /sheet3 7 C /sheet5 7 B	DISC /sheet8 9 E /sheet8 12 F	HW_DET_MOB_TYPE36 /sheet5 2 F /sheet5 3 D	LIGHT_PWM32 /sheet5 13 D /sheet10 8 C						
		CIF_CS_DISPLAY /sheet3 7 C /sheet5 7 B	DISC /sheet8 9 E /sheet8 12 F	HW_DET_MOB_TYPE37 /sheet5 2 F /sheet5 3 D	LIGHT_PWM33 /sheet5 13 D /sheet10 8 C						
		CIF_CS_DISPLAY /sheet3 7 C /sheet5 7 B	DISC /sheet8 9 E /sheet8 12 F	HW_DET_MOB_TYPE38 /sheet5 2 F /sheet5 3 D	LIGHT_PWM34 /sheet5 13 D /sheet10 8 C						
		CIF_CS_DISPLAY /sheet3 7 C /sheet5 7 B	DISC /sheet8 9 E /sheet8 12 F	HW_DET_MOB_TYPE39 /sheet5 2 F /sheet5 3 D	LIGHT_PWM35 /sheet5 13 D /sheet10 8 C						
		CIF_CS_DISPLAY /sheet3 7 C /sheet5 7 B	DISC /sheet8 9 E /sheet8 12 F	HW_DET_MOB_TYPE40 /sheet5 2 F /sheet5 3 D	LIGHT_PWM36 /sheet5 13 D /sheet10 8 C						
		CIF_CS_DISPLAY /sheet3 7 C /sheet5 7 B	DISC /sheet8 9 E /sheet8 12 F	HW_DET_MOB_TYPE41 /sheet5 2 F /sheet5 3 D	LIGHT_PWM37 /sheet5 13 D /sheet10 8 C						
		CIF_CS_DISPLAY /sheet3 7 C /sheet5 7 B	DISC /sheet8 9 E /sheet8 12 F	HW_DET_MOB_TYPE42 /sheet5 2 F /sheet5 3 D	LIGHT_PWM38 /sheet5 13 D /sheet10 8 C						
		CIF_CS_DISPLAY /sheet3 7 C /sheet5 7 B	DISC /sheet8 9 E /sheet8 12 F	HW_DET_MOB_TYPE43 /sheet5 2 F /sheet5 3 D	LIGHT_PWM39 /sheet5 13 D /sheet10 8 C						
		CIF_CS_DISPLAY /sheet3 7 C /sheet5 7 B	DISC /sheet8 9 E /sheet8 12 F	HW_DET_MOB_TYPE44 /sheet5 2 F /sheet5 3 D	LIGHT_PWM40 /sheet5 13 D /sheet10 8 C						
		CIF_CS_DISPLAY /sheet3 7 C /sheet5 7 B	DISC /sheet8 9 E /sheet8 12 F	HW_DET_MOB_TYPE45 /sheet5 2 F /sheet5 3 D	LIGHT_PWM41 /sheet5 13 D /sheet10 8 C						
		CIF_CS_DISPLAY /sheet3 7 C /sheet5 7 B	DISC /sheet8 9 E /sheet8 12 F	HW_DET_MOB_TYPE46 /sheet5 2 F /sheet5 3 D	LIGHT_PWM42 /sheet5 13 D /sheet10 8 C						
		CIF_CS_DISPLAY /sheet3 7 C /sheet5 7 B	DISC /sheet8 9 E /sheet8 12 F	HW_DET_MOB_TYPE47 /sheet5 2 F /sheet5 3 D	LIGHT_PWM43 /sheet5 13 D /sheet10 8 C						
		CIF_CS_DISPLAY /sheet3 7 C /sheet5 7 B	DISC /sheet8 9 E /sheet8 12 F	HW_DET_MOB_TYPE48 /sheet5 2 F /sheet5 3 D	LIGHT_PWM44 /sheet5 13 D /sheet10 8 C						
		CIF_CS_DISPLAY /sheet3 7 C /sheet5 7 B	DISC /sheet8 9 E /sheet8 12 F	HW_DET_MOB_TYPE49 /sheet5 2 F /sheet5 3 D	LIGHT_PWM45 /sheet5 13 D /sheet10 8 C						
		CIF_CS_DISPLAY /sheet3 7 C /sheet5 7 B	DISC /sheet8 9 E /sheet8 12 F	HW_DET_MOB_TYPE50 /sheet5 2 F /sheet5 3 D	LIGHT_PWM46 /sheet5 13 D /sheet10 8 C						
		CIF_CS_DISPLAY /sheet3 7 C /sheet5 7 B	DISC /sheet8 9 E /sheet8 12 F	HW_DET_MOB_TYPE51 /sheet5 2 F /sheet5 3 D	LIGHT_PWM47 /sheet5 13 D /sheet10 8 C						
		CIF_CS_DISPLAY /sheet3 7 C /									

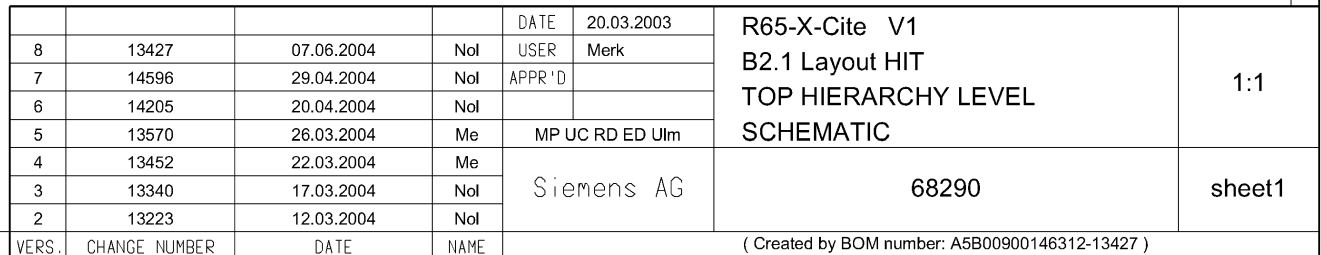
Proprietary data, company confidential.
All rights reserved

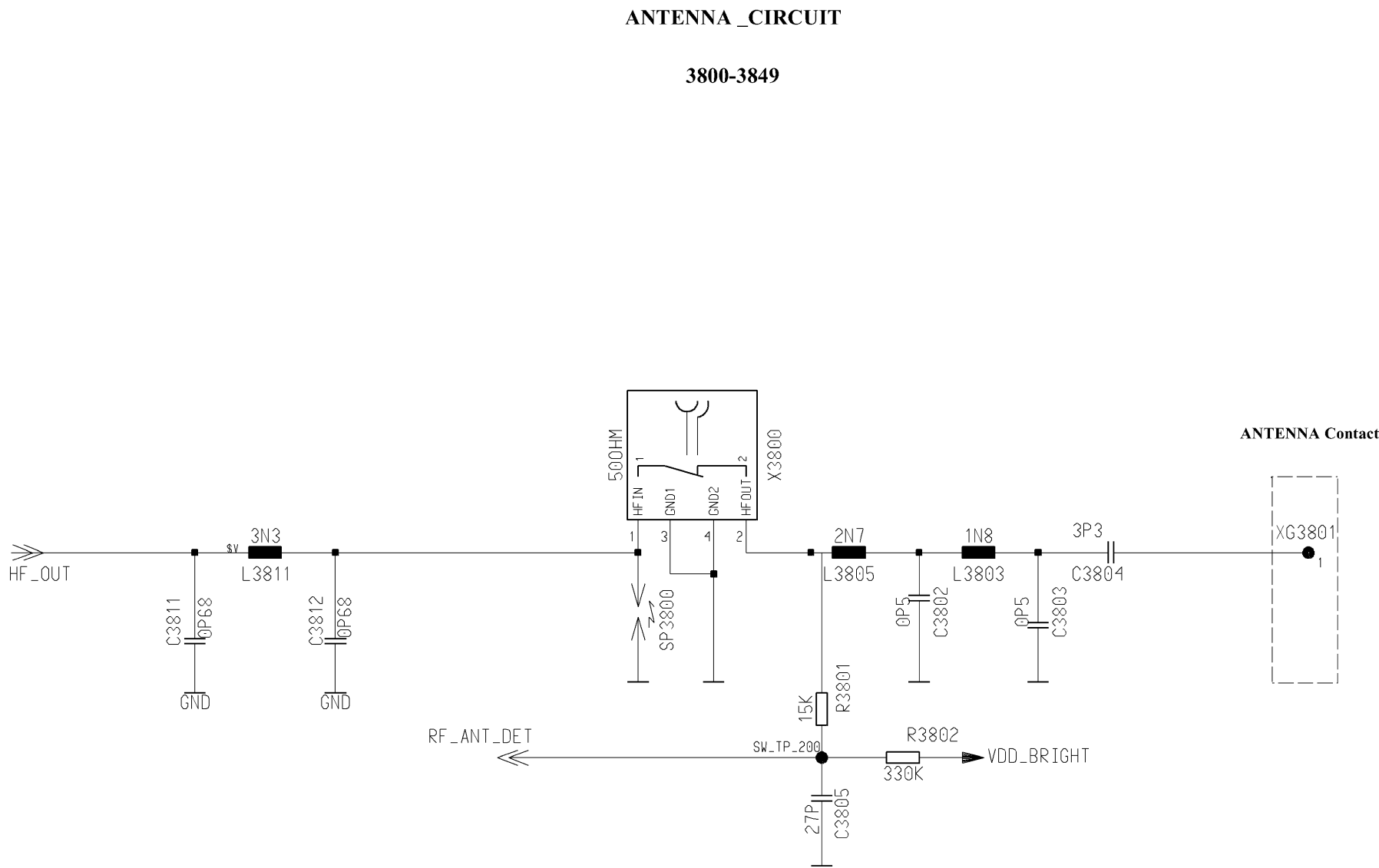
Als Betriebsgeheimnis anvertraut
Alle Rechte vorbehalten

C1000 /sheet5 3 E	C1336 /sheet7 10 D	C2422 /sheet10 9 C	C3982 /sheet1 2 E	R1306 /sheet7 3 C	R3625 /sheet3 3 E	V1605 /sheet10 3 F
C1001 /sheet5 2 E	C1337 /sheet7 6 B	C2423 /sheet10 9 C	C3983 /sheet1 3 E	R1308 /sheet7 3 D	R3626 /sheet3 2 E	V2100 /sheet9 4 B
C1002 /sheet5 2 E	C1338 /sheet7 8 B	C2500 /sheet8 15 C	C3984 /sheet1 4 F	R1309 /sheet7 7 D	R3627 /sheet3 3 F	V2302 /sheet10 5 B
C1003 /sheet5 2 E	C1339 /sheet7 7 C	C2501 /sheet8 13 B	C3985 /sheet1 5 E	R1311 /sheet7 3 B	R3633 /sheet3 1 C	V2303 /sheet10 2 B
C1004 /sheet5 7 A	C1340 /sheet7 7 C	C2502 /sheet8 13 B	C3986 /sheet1 5 E	R1313 /sheet7 2 F	R3635 /sheet3 6 E	V2404-2 /sheet10 10 C
C1010 /sheet5 6 A	C1341 /sheet7 7 C	C2503 /sheet8 13 B	C3987 /sheet1 4 E	R1314 /sheet7 2 F	R3801 /sheet2 8 D	V2404-1 /sheet10 11 B
C1011 /sheet5 10 B	C1342 /sheet7 7 C	C2633 /sheet9 12 E	C3988 /sheet1 5 E	R1315 /sheet7 7 F	R3802 /sheet2 9 D	V2406 /sheet10 11 B
C1012 /sheet5 14 B	C1343 /sheet7 7 C	C2634 /sheet9 10 E	C3989 /sheet1 6 E	R1320 /sheet7 7 D	R3901 /sheet1 2 C	V2407 /sheet10 12 B
C1013 /sheet5 14 C	C1344 /sheet7 8 B	C2635 /sheet9 13 E	C3990 /sheet1 2 F	R1328 /sheet7 7 E	R3902 /sheet1 2 C	V2520 /sheet8 15 C
C1014 /sheet5 15 C	C1345 /sheet7 8 C	C2636 /sheet9 10 F	C3991 /sheet1 3 F	R1340 /sheet7 11 D	R3903 /sheet1 5 B	V2650 /sheet9 12 E
C1037 /sheet5 3 C	C1346 /sheet7 7 E	C2651 /sheet9 11 F	C3992 /sheet1 5 F	R1341 /sheet7 11 D	R3904 /sheet1 5 C	V2808 /sheet10 12 B
C1038 /sheet5 13 F	C1347 /sheet7 7 E	C2652 /sheet9 14 E	C3993 /sheet1 6 F	R1342 /sheet7 9 D	R3905 /sheet1 5 C	V2809 /sheet10 13 B
C1110 /sheet6 5 C	C1348 /sheet7 7 E	C2653 /sheet9 13 E	C3994 /sheet1 5 F	R1343 /sheet7 10 E	R3906 /sheet1 5 C	V2821-1 /sheet10 5 C
C1120 /sheet6 2 C	C1349 /sheet7 4 E	C2821 /sheet10 3 C	C3995 /sheet1 6 F	R1344 /sheet7 11 F	R3907 /sheet1 5 D	V2821-2 /sheet10 5 C
C1121 /sheet6 2 C	C1350 /sheet7 7 F	C2823 /sheet10 4 C	C3996 /sheet1 2 E	R1353 /sheet7 9 G	R3908 /sheet1 5 D	V3961 /sheet1 13 B
C1122 /sheet6 2 B	C1351 /sheet7 11 E	C3600 /sheet3 3 B	C3997 /sheet1 2 E	R1399 /sheet7 7 C	R3909 /sheet1 6 D	X1000 /sheet5 13 F
C1123 /sheet6 3 B	C1352 /sheet7 11 D	C3601 /sheet3 3 B	D1000-2 /sheet6 1 E	R1500 /sheet8 4 F	R3910 /sheet1 6 D	X1300 /sheet7 3 H
C1124 /sheet6 3 B	C1353 /sheet7 3 D	C3602 /sheet3 3 B	D1000-1 /sheet5 12 F	R1501 /sheet8 4 F	R3911 /sheet1 8 F	X1400 /sheet8 2 B
C1125 /sheet6 3 B	C1354 /sheet7 11 C	C3603 /sheet3 3 B	D1000-3 /sheet5 1 A	R1502 /sheet8 5 F	R3920 /sheet1 6 D	X1504 /sheet8 2 E
C1126 /sheet6 4 C	C1355 /sheet7 11 D	C3604 /sheet3 11 E	D1201 /sheet6 10 F	R1503 /sheet8 8 E	R3922 /sheet1 11 A	X1604 /sheet10 2 E
C1127 /sheet6 4 C	C1356 /sheet7 11 D	C3605 /sheet3 11 D	D1203 /sheet6 10 D	R1504 /sheet8 8 E	R3923 /sheet1 10 B	X1700 /sheet9 1 G
C1128 /sheet6 5 C	C1357 /sheet7 10 D	C3606 /sheet3 11 E	D1300 /sheet7 4 F	R1505 /sheet8 5 F	R3924 /sheet1 10 B	X2202 /sheet8 7 B
C1129 /sheet6 5 B	C1358 /sheet7 11 D	C3607 /sheet3 11 E	D2520 /sheet8 13 C	R1506 /sheet8 9 G	R3925 /sheet1 7 D	X2203 /sheet8 8 C
C1130 /sheet6 5 C	C1360 /sheet7 10 F	C3608 /sheet3 13 E	D3601 /sheet3 4 F	R1508 /sheet8 8 F	R3926 /sheet1 11 C	X2705 /sheet9 11 B
C1131 /sheet6 6 D	C1361 /sheet7 10 F	C3609-2 /sheet3 13 E	L1300 /sheet7 2 B	R1509 /sheet8 14 D	R3927 /sheet1 12 D	X3551 /sheet3 11 F
C1132 /sheet6 6 D	C1362 /sheet7 11 F	C3609-1 /sheet3 14 E	L1301 /sheet7 10 C	R1510 /sheet8 14 E	R3928 /sheet1 6 A	X3552 /sheet3 12 F
C1133 /sheet6 7 D	C1363 /sheet7 7 B	C3610 /sheet3 2 C	L1302 /sheet7 10 D	R1511 /sheet8 14 E	R3929 /sheet1 7 B	X3553 /sheet3 14 F
C1134 /sheet6 7 D	C1364 /sheet7 7 B	C3611 /sheet3 11 A	L1303 /sheet7 2 B	R1512 /sheet8 7 D	R3930 /sheet1 8 E	X3600 /sheet3 9 C
C1135 /sheet6 7 D	C1381 /sheet7 4 E	C3612 /sheet3 11 A	L1318 /sheet7 7 C	R1514 /sheet8 11 D	R3931 /sheet1 7 A	X3800 /sheet2 8 C
C1136 /sheet6 6 E	C1382 /sheet7 4 E	C3613 /sheet3 11 A	L1320 /sheet7 10 A	R1515 /sheet8 12 D	R3962 /sheet1 13 C	X3901 /sheet1 9 G
C1137 /sheet6 6 E	C1383 /sheet7 2 E	C3614 /sheet3 11 B	L1331 /sheet7 10 D	R1516 /sheet8 11 D	R3963 /sheet1 14 C	Z1000 /sheet5 2 E
C1139 /sheet6 6 E	C1384 /sheet7 2 E	C3615 /sheet3 11 B	L2633 /sheet9 13 E	R1517 /sheet8 15 A	R3964 /sheet1 14 B	Z1500 /sheet8 13 F
C1140 /sheet6 2 C	C1385 /sheet7 2 E	C3616 /sheet3 11 B	L3803 /sheet2 9 C	R1524 /sheet8 6 G	R3965 /sheet1 14 B	Z3961 /sheet1 12 B
C1141 /sheet6 7 C	C1386 /sheet7 2 E	C3617 /sheet3 1 C	L3804 /sheet2 10 C	R1525 /sheet8 6 F	R3966 /sheet1 15 B	
C1200 /sheet6 8 B	C1387 /sheet7 4 E	C3618 /sheet3 3 D	L3805 /sheet2 9 C	R1591 /sheet8 9 E	R3967 /sheet1 15 B	
C1201 /sheet6 9 B	C1391 /sheet7 6 E	C3802 /sheet2 9 C	L3811 /sheet2 5 C	R1613 /sheet10 4 E	R3981 /sheet1 2 F	
C1202 /sheet6 12 G	C1400 /sheet8 3 B	C3803 /sheet2 9 C	L3901 /sheet1 6 C	R1614 /sheet10 7 E	R3982 /sheet1 2 F	
C1203 /sheet6 12 G	C1401 /sheet8 4 B	C3804 /sheet2 10 C	L3902 /sheet1 6 C	R1703 /sheet9 5 F	R3983 /sheet1 6 F	
C1204 /sheet6 12 G	C1402 /sheet8 4 B	C3805 /sheet2 8 D	L3921 /sheet1 9 D	R1704 /sheet9 5 F	S2700 /sheet9 13 B	
C1205 /sheet6 12 G	C1405 /sheet8 4 B	C3811 /sheet2 5 C	L3922 /sheet1 9 D	R1901 /sheet9 4 D	TP1246 /sheet6 10 B	
C1206 /sheet6 9 B	C1426 /sheet8 2 B	C3812 /sheet2 6 C	L3923 /sheet1 9 A	R1902 /sheet9 4 D	TP1247 /sheet6 9 B	
C1207 /sheet6 13 G	C1502 /sheet8 6 F	C3901 /sheet1 2 C	L3924 /sheet1 10 E	R1926 /sheet9 5 D	TP3602 /sheet3 14 D	
C1208 /sheet6 9 B	C1504 /sheet8 4 D	C3902 /sheet1 2 D	L3980 /sheet1 4 F	R1927 /sheet9 5 D	TP3600 /sheet3 11 D	
C1209 /sheet6 9 B	C1506 /sheet8 9 F	C3903 /sheet1 6 D	L3981 /sheet1 5 F	R2310 /sheet10 4 A	TP3601 /sheet3 14 D	
C1211 /sheet6 9 B	C1507 /sheet8 6 D	C3904 /sheet1 6 B	L3982 /sheet1 5 F	R2311 /sheet10 5 B	TP1014 /sheet5 15 A	
C1220 /sheet6 9 B	C1508 /sheet8 5 F	C3905 /sheet1 6 C	N1330 /sheet7 11 C	R2312 /sheet10 4 B	TP1013 /sheet5 13 A	
C1301 /sheet7 2 B	C1509 /sheet8 6 F	C3906 /sheet1 6 C	N1501 /sheet8 11 E	R2321 /sheet10 3 A	TP1022 /sheet5 9 B	
C1302 /sheet7 4 A	C1510 /sheet8 7 F	C3907 /sheet1 6 C	N3600 /sheet3 11 E	R2415 /sheet10 12 A	TP1012 /sheet5 12 A	
C1303 /sheet7 4 B	C1511 /sheet8 6 F	C3920 /sheet1 11 A	N3901 /sheet1 4 C	R2416 /sheet10 12 A	TP3971 /sheet1 7 E	
C1304-2 /sheet7 2 B	C1512 /sheet8 7 F	C3921 /sheet1 10 A	N3921 /sheet1 8 C	R2417 /sheet10 11 B	TP3980 /sheet1 2 F	
C1304-1 /sheet7 2 B	C1513 /sheet8 8 F	C3922 /sheet1 8 B	N3981 /sheet1 3 F	R2418 /sheet10 11 A	TP3921 /sheet1 6 D	
C1305 /sheet7 10 B	C1514 /sheet8 9 F	C3923 /sheet1 9 B	R1000 /sheet5 3 F	R2419 /sheet10 9 C	TP3970 /sheet1 6 A	
C1306 /sheet7 3 B	C1515 /sheet8 12 D	C3924 /sheet1 11 B	R1001 /sheet5 3 G	R2420 /sheet10 12 C	TP3920 /sheet1 13 C	
C1307 /sheet7 3 B	C1522 /sheet8 5 F	C3925 /sheet1 10 B	R1003 /sheet5 3 G	R2421 /sheet10 12 B	TP1509 /sheet8 14 D	
C1308 /sheet7 3 D	C1523 /sheet8 5 D	C3926 /sheet1 11 B	R1004 /sheet5 3 G	R2422 /sheet10 13 B	TP1317 /sheet7 8 B	
C1309 /sheet7 4 D	C1524 /sheet8 7 F	C3927 /sheet1 9 B	R1006 /sheet5 3 E	R2423 /sheet10 8 C	TP1309 /sheet7 8 B	
C1310 /sheet7 4 D	C1527 /sheet8 12 D	C3928 /sheet1 8 B	R1012 /sheet5 7 B	R2424 /sheet10 12 B	TP1320 /sheet7 7 C	
C1311 /sheet7 4 D	C1528 /sheet8 14 E	C3929 /sheet1 8 B	R1014 /sheet5 10 B	R2520 /sheet8 14 B	TP1321 /sheet7 7 C	
C1312 /sheet7 4 D	C1541 /sheet8 6 F	C3930 /sheet1 10 B	R1015 /sheet5 9 A	R2521 /sheet8 14 B	TP1308 /sheet7 8 B	
C1313 /sheet7 4 D	C1601 /sheet10 4 F	C3931 /sheet1 7 C	R1018 /sheet5 13 A	R2632 /sheet9 12 E	TP1327 /sheet7 10 C	
C1314 /sheet7 4 D	C1602 /sheet10 5 F	C3932 /sheet1 11 D	R1021 /sheet5 15 A	R2633 /sheet9 14 E	TP1334 /sheet7 7 C	
C1315-2 /sheet7 10 B	C1603 /sheet10 5 F	C3933 /sheet1 7 D	R1022 /sheet5 15 B	R2727 /sheet9 8 B	TP1302 /sheet7 4 D	
C1315-1 /sheet7 10 B	C1604 /sheet10 5 F	C3934 /sheet1 8 D	R1023 /sheet5 15 C	R2728 /sheet9 8 C	TP1311 /sheet7 8 B	
C1316 /sheet7 7 C	C1605 /sheet10 6 F	C3935 /sheet1 8 E	R1024 /sheet5 14 D	R2729 /sheet9 8 C	TP1318 /sheet7 6 C	
C1317 /sheet7 3 E	C1606 /sheet10 5 F	C3936 /sheet1 9 E	R1025 /sheet5 14 D	R2871 /sheet10 4 C	TP1312 /sheet7 8 B	
C1318-1 /sheet7 11 B	C1705 /sheet9 4 F	C3937 /sheet1 9 E	R1038 /sheet5 10 A	R2872 /sheet10 3 C	TP1307 /sheet7 8 B	
C1318-2 /sheet7 11 B	C1708 /sheet9 4 F	C3938 /sheet1 9 E	R1039 /sheet5 9 A	R2873 /sheet10 5 C	TP2401 /sheet10 12 B	
C1319 /sheet7 3 E	C1709 /sheet9 4 F	C3939 /sheet1 9 B	R1040 /sheet5 2 F	R2874 /sheet10 3 C	TP2402 /sheet10 13 B	
C1320 /sheet7 8 C	C1901 /sheet9 3 D	C3940 /sheet1 13 D	R1041 /sheet5 3 F	R3600 /sheet3 6 F	V1302 /sheet7 10 C	
C1321 /sheet7 3 E	C1902 /sheet9 3 D	C3941 /sheet1 13 D	R1042 /sheet5 2 F	R3601 /sheet3 6 F	V1303 /sheet7 11 D	
C1322 /sheet7 3 E	C1904 /sheet9 3 D	C3942 /sheet1 13 D	R1043 /sheet5 3 F	R3603 /sheet3 2 C	V1304 /sheet7 10 E	
C1323 /sheet7 3 E	C2100 /sheet9 3 B	C3943 /sheet1 13 D	R1045 /sheet5 3 G	R3604 /sheet3 13 B	V1305-1 /sheet7 10 G	
C1324 /sheet7 3 E	C2110 /sheet9 5 B	C3944 /sheet1 12 E	R1046 /sheet5 2 G	R3605 /sheet3 13 B	V1305-2 /sheet7 10 G	
C1325 /sheet7 3 E	C2130 /sheet9 9 C	C3945 /sheet1 13 E	R1047 /sheet5 3 G	R3606 /sheet3 13 B	V1364 /sheet7 7 A	
C1326 /sheet7 3 F	C2131 /sheet9 10 C	C3946 /sheet1 13 E	R1048 /sheet5 2 G	R3607 /sheet3 13 B	V1400 /sheet8 3 B	
C1327 /sheet7 3 F	C2132 /sheet9 10 C	C3947 /sheet1 13 E	R1049 /sheet5 3 G	R3608 /sheet3 13 B	V1500 /sheet8 9 G	
C1328 /sheet7 4 F	C2133 /sheet9 10 C	C3948 /sheet1 12 D	R1050 /sheet5 2 G	R3609 /sheet3 13 B		
C1329-1 /sheet7 6 B	C2134 /sheet9 9 C	C3949 /sheet1 7 D	R1051 /sheet5 3 G	R3610 /sheet3 10 B		
C1329-2 /sheet7 6 B	C2135 /sheet9 8 C	C3961 /sheet1 13 B	R1052 /sheet5 2 G	R3611 /sheet3 13 B		
C1330-1 /sheet7 6 B	C2231 /sheet8 8 B	C3962 /sheet1 13 B	R1130 /sheet6 2 C	R3612 /sheet3 13 C		
C1330-2 /sheet7 6 B	C2232 /sheet10 8 B	C3963 /sheet1 14 B	R1200 /sheet6 11 A	R3613 /sheet3 13 C		
C1331 /sheet7 10 B	C2233 /sheet8 9 B	C3964 /sheet1 14 B	R1210 /sheet6 9 B	R3614 /sheet3 13 C		
C1332-1 /sheet7 7 B	C2235 /sheet8 10 B	C3965 /sheet1 14 B	R1300 /sheet7 3 B	R3615 /sheet3 13 C		
C1332-2 /sheet7 8 B	C2236 /sheet8 9 B	C3966 /sheet1 15 B	R1302 /sheet7 3 B	R3616 /sheet3 13 C		
C1333 /sheet7 6 E	C2237 /sheet8 8 B	C3971 /sheet1 8 E	R1303 /sheet7 2 C	R3617 /sheet3 13 C		
C1334 /sheet7 6 E	C2238 /sheet8 9 B	C3973 /sheet1 8 E	R1304 /sheet7 3 C	R3618 /sheet3 11 D		
C1335 /sheet7 6 E	C2320 /sheet10 4 B	C3981 /sheet1 2 E	R1305 /sheet7 3 C	R3623 /sheet3 3 C		

Confidential
Copyright © Siemens AG

				DATE	20.03.2003	R65-X-Cite V1 B2.1 Layout HIT TOP HIERARCHY LEVEL SCHEMATIC	1:1
8	13427	07.06.2004	NoI	USER	Merk		
7	14596	29.04.2004	NoI	APPR'D			
6	14205	20.04.2004	NoI				
5	13570	26.03.2004	Me	MP UC RD ED Ulm			
4	13452	22.03.2004	Me	Siemens AG		68290	poslist1
3	13340	17.03.2004	NoI				
2	13223	12.03.2004	NoI				
VERS.	CHANGE NUMBER	DATE	NAME	(Created by BOM number: A5B00900146312-13427)			





Confidential
Copyright © Siemens AG

8	13427	07.06.2004	No!	DATE	20.03.2003	R65-X-Cite V1 B2.1 Layout HIT TOP HIERARCHY LEVEL SCHEMATIC	1:1
7	14596	29.04.2004	No!	USER	Merk		
6	14205	20.04.2004	No!	APPR'D			
5	13570	26.03.2004	Me	MP UC RD ED Ulm			
4	13452	22.03.2004	Me				
3	13340	17.03.2004	No!	Siemens AG		68290	sheet2
2	13223	12.03.2004	No!				
VERS.	CHANGE NUMBER	DATE	NAME	(Created by BOM number: A5B00900146312-13427)			

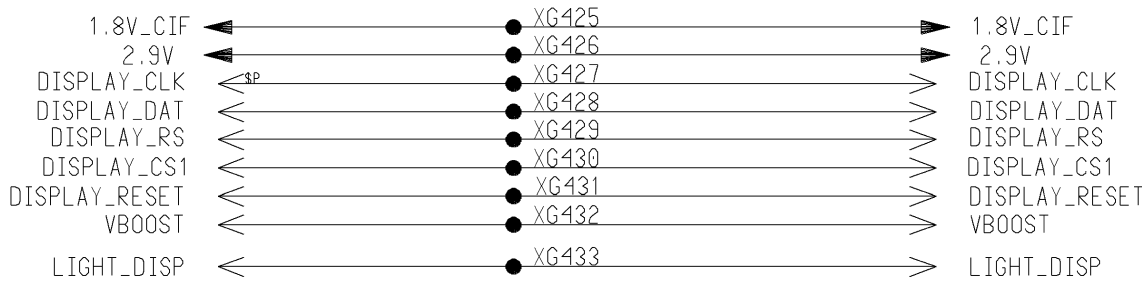
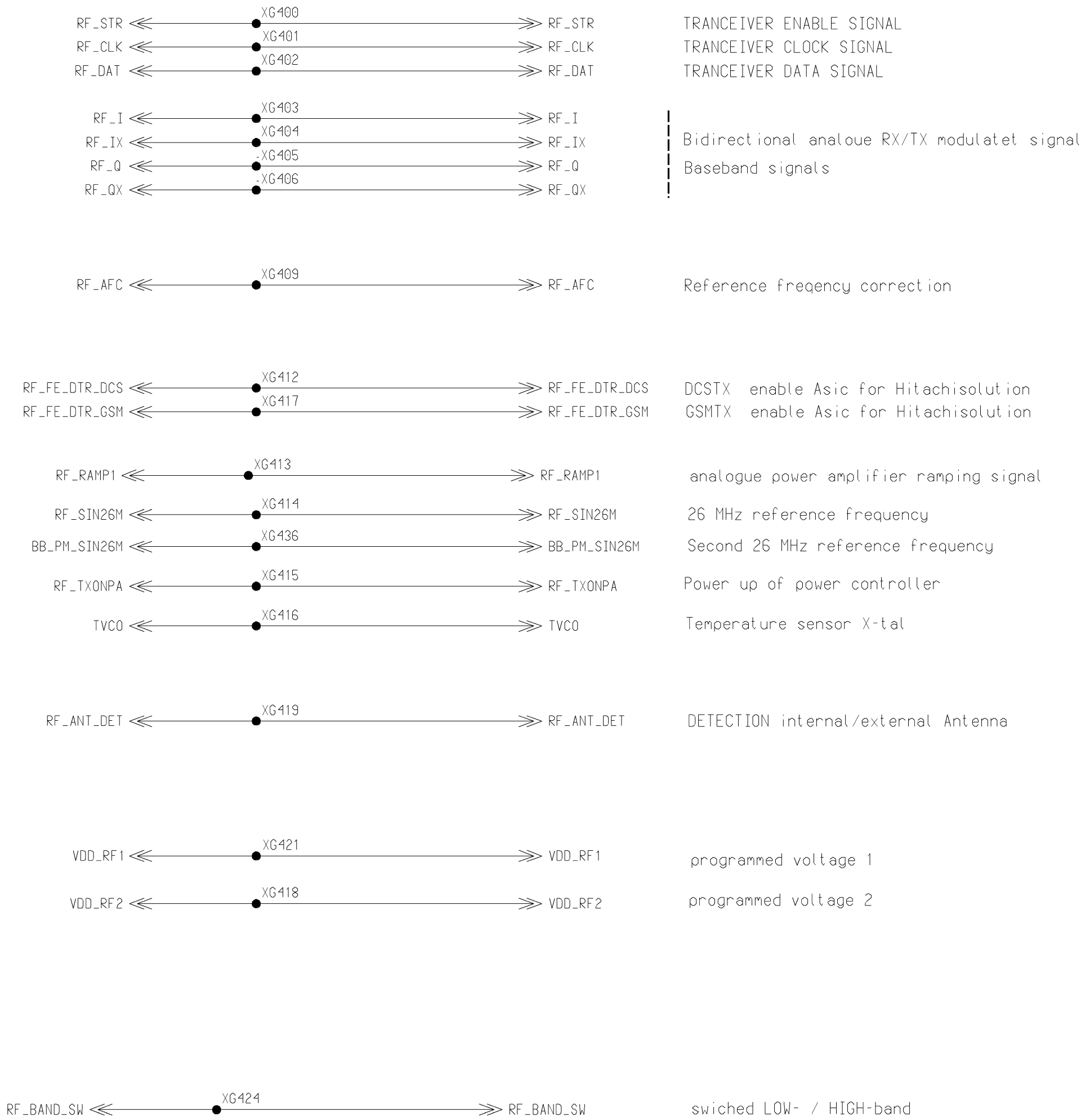


8	13427	07.06.2004	No!	DATE	20.03.2003	R65-X-Cite V1 B2.1 Layout HIT TOP HIERARCHY LEVEL SCHEMATIC	1:1
7	14596	29.04.2004	No!	USER	Merk		
6	14205	20.04.2004	No!	APPR'D			
5	13570	26.03.2004	Me	MP UC RD ED Ulm			
4	13452	22.03.2004	Me	Siemens AG	68290	sheet3	
3	13340	17.03.2004	No!				
2	13223	12.03.2004	No!				
VERS.	CHANGE NUMBER	DATE	NAME	(Created by BOM number: A5B00900146312-13427)			

Proprietary data, Company confidential.
all rights reserved

Als Betriebsgeheimnis anvertraut
alle Rechte vorbehalten

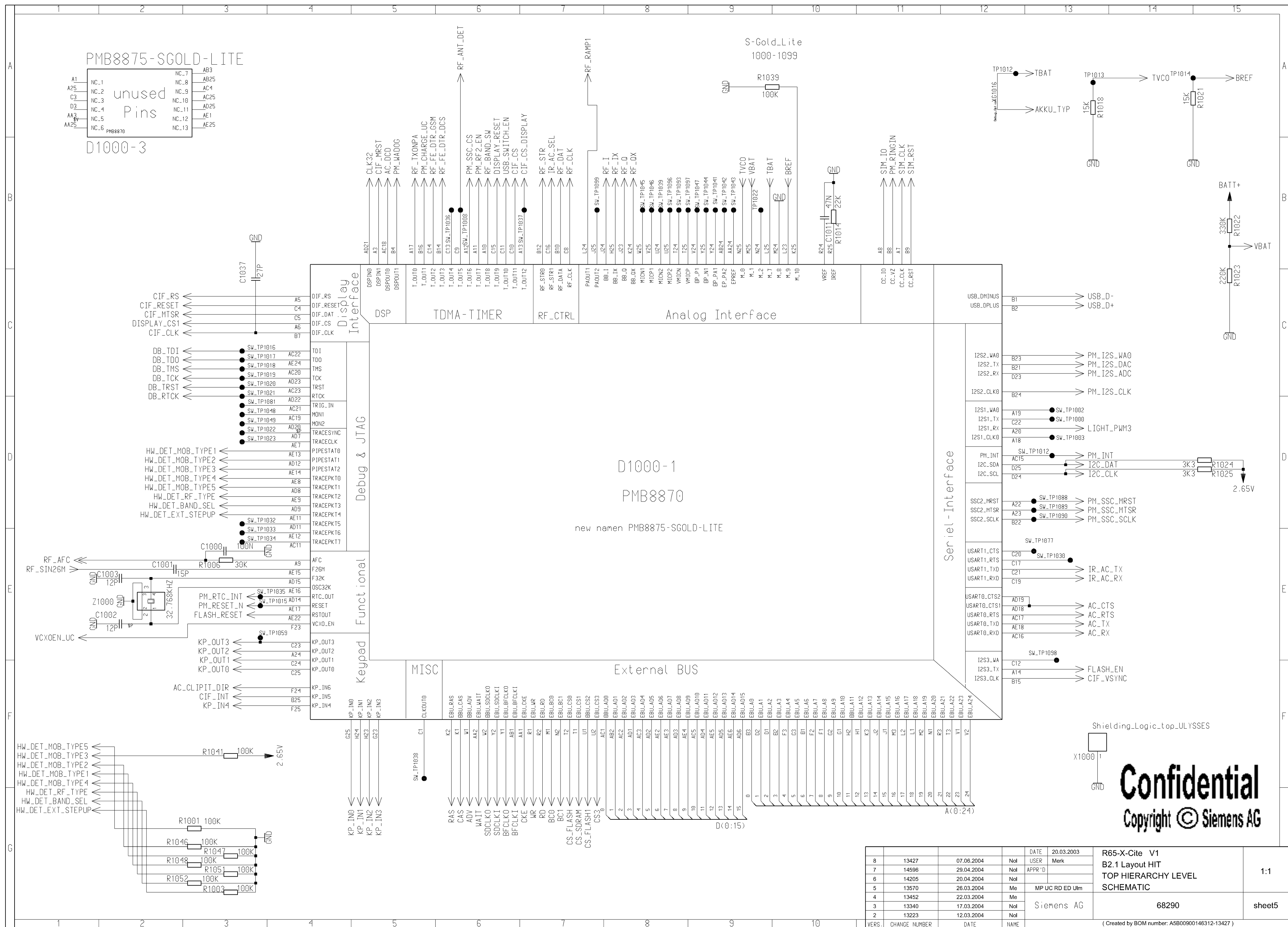
HIT_POINTS LOGIK/HF_PART_1
400-449



SAR-GND-PAD

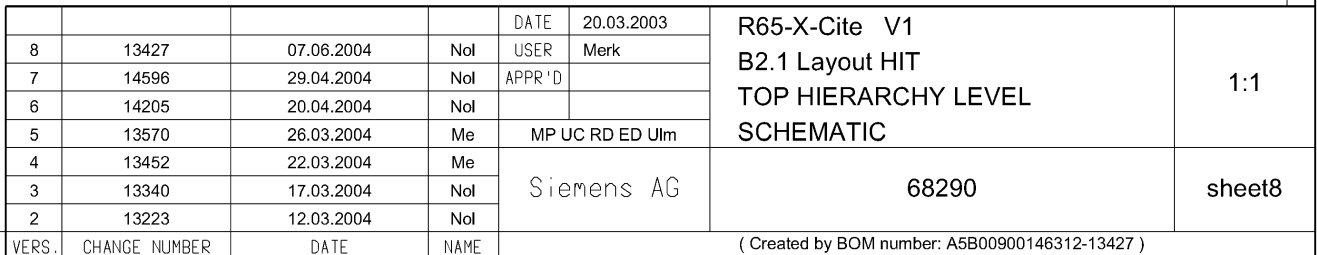
Confidential
Copyright © Siemens AG

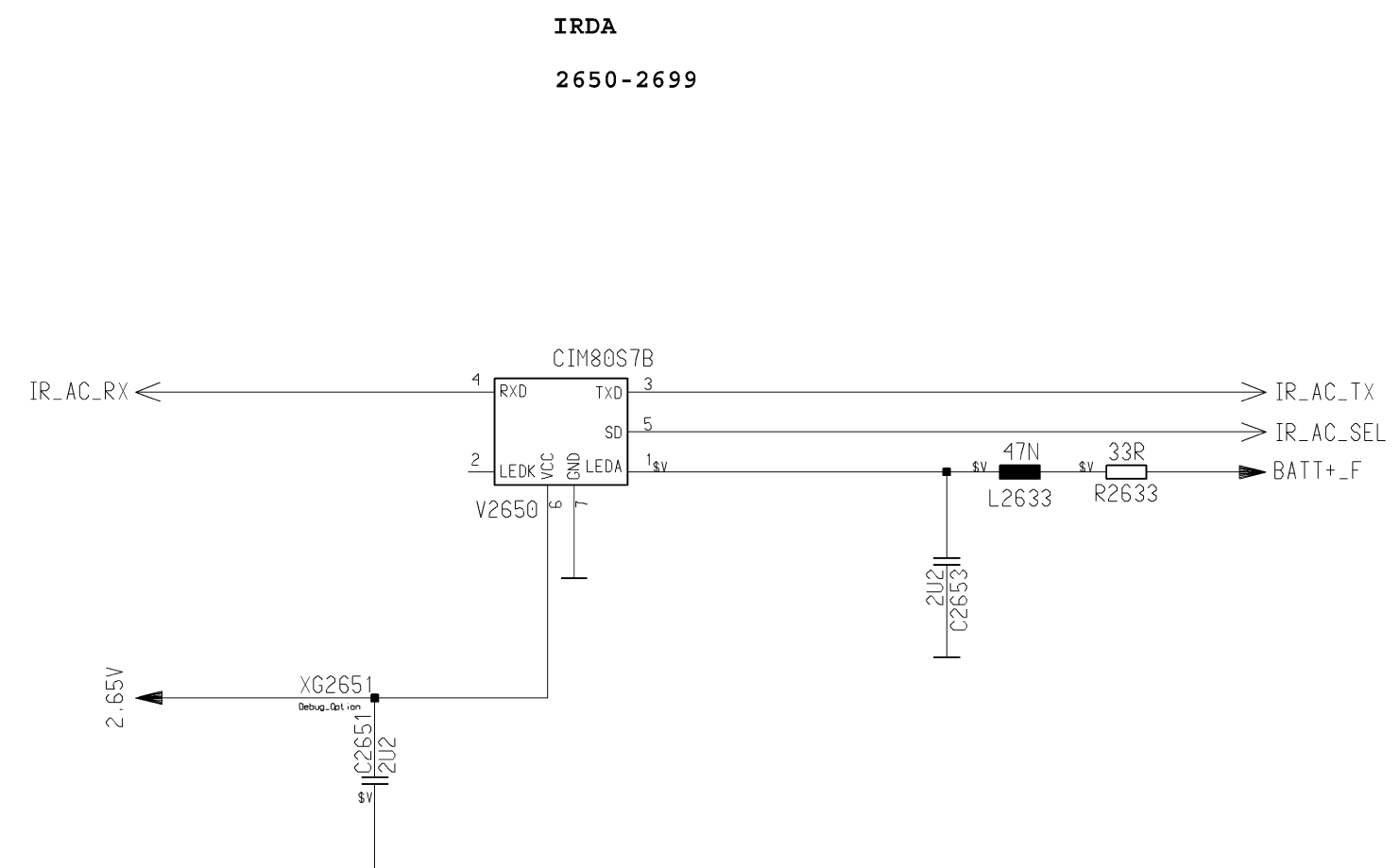
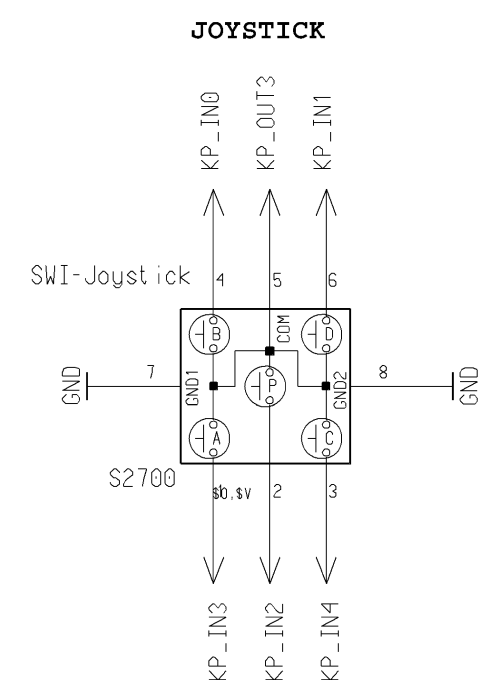
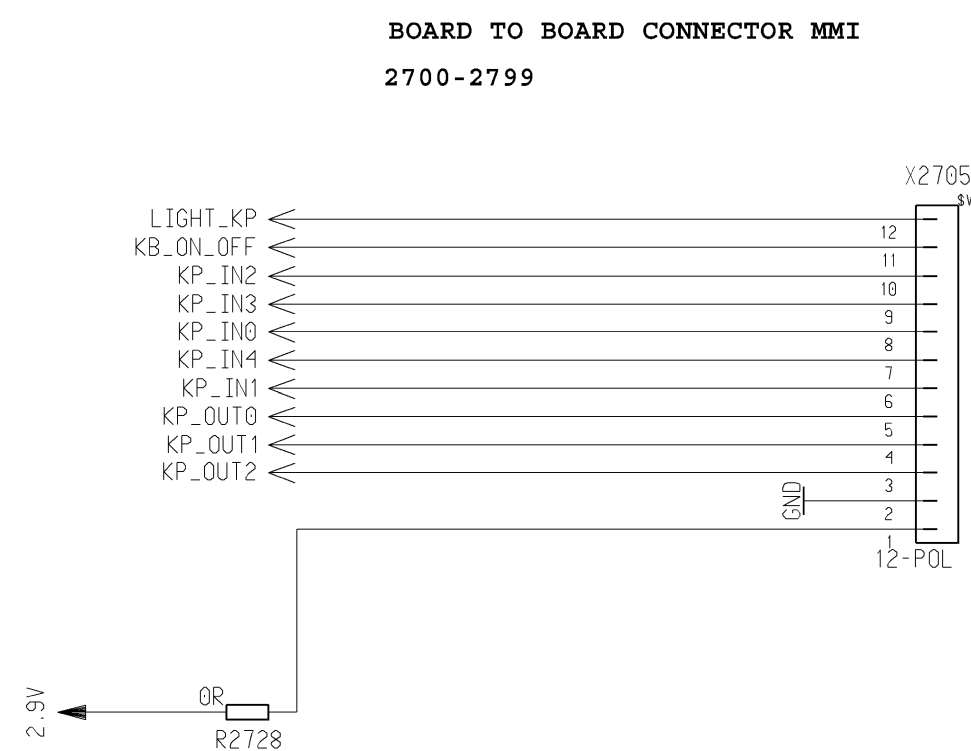
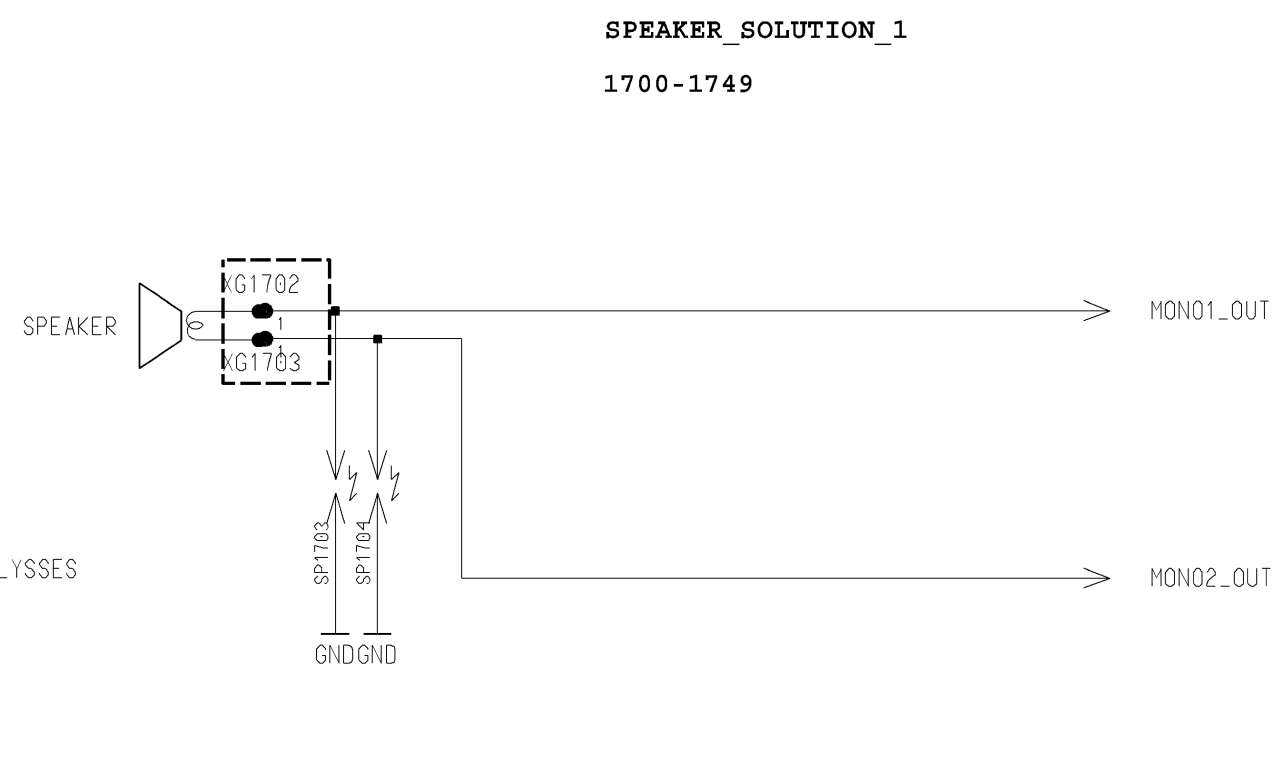
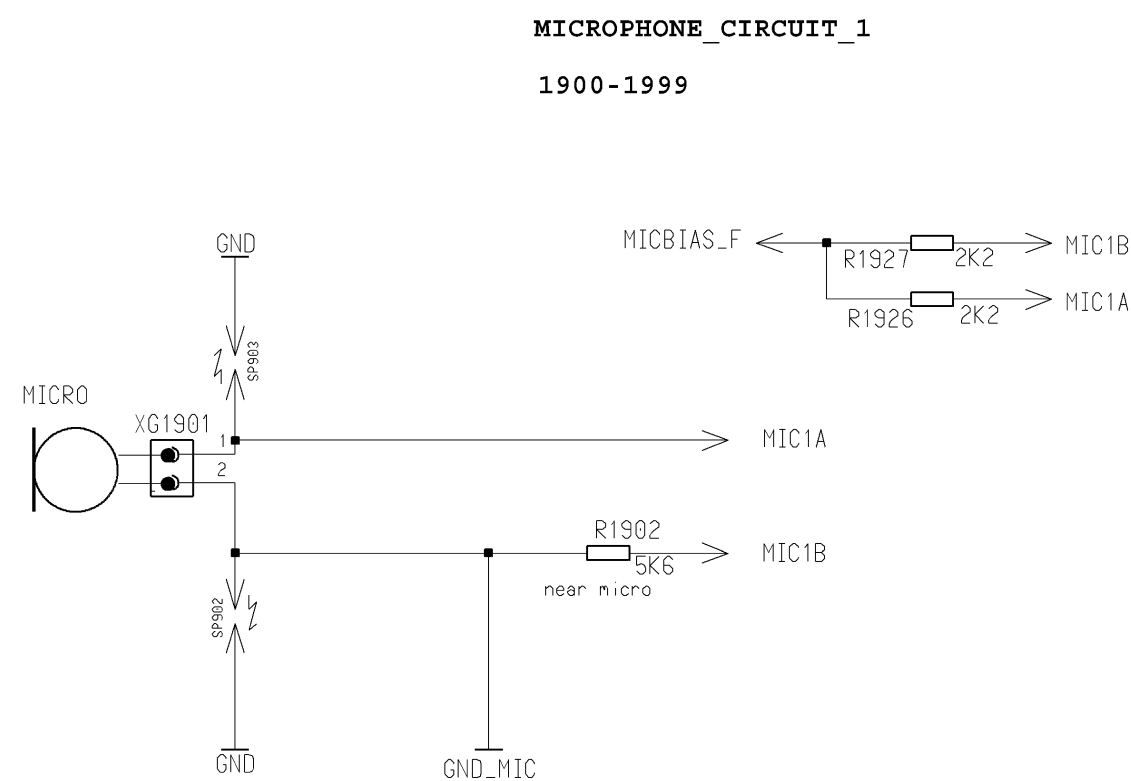
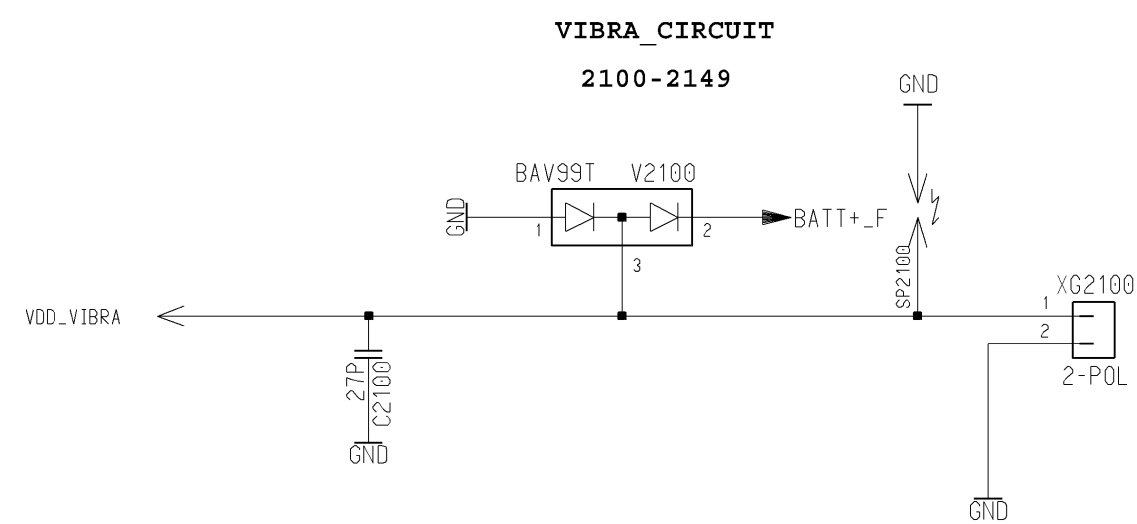
				DATE	20.03.2003	R65-X-Cite V1 B2.1 Layout HIT TOP HIERARCHY LEVEL SCHEMATIC	1:1
8	13427	07.06.2004	Nol	USER	Merk		
7	14596	29.04.2004	Nol	APPR'D			
6	14205	20.04.2004	Nol				
5	13570	26.03.2004	Me	MP UC RD ED Ulm			
4	13452	22.03.2004	Me	Siemens AG		68290	sheet4
3	13340	17.03.2004	Nol				
2	13223	12.03.2004	Nol				
VERS.	CHANGE NUMBER	DATE	NAME	(Created by BOM number: A5B00900146312-13427)			





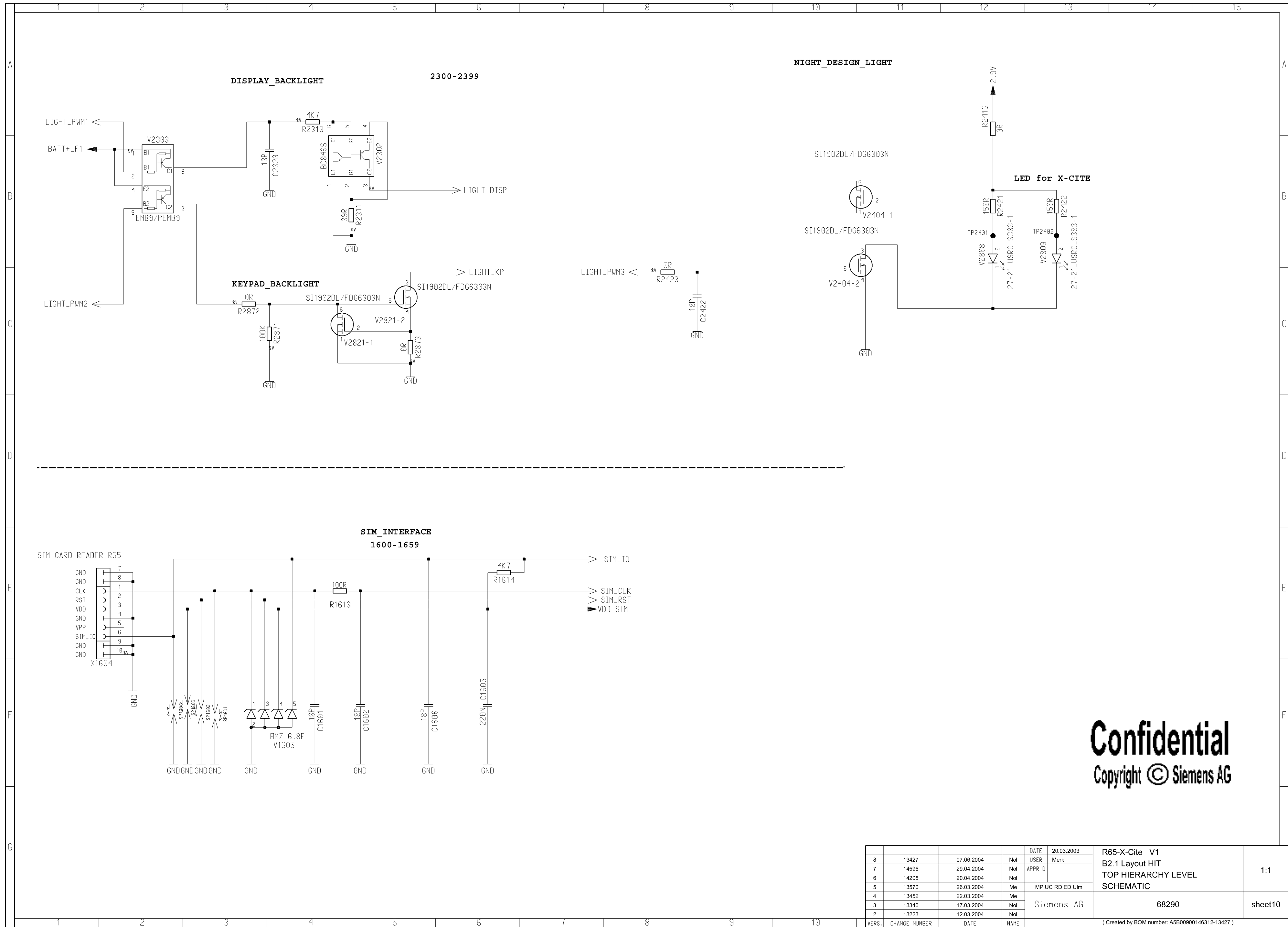
8	13427	07.06.2004	No!	DATE	20.03.2003	R65-X-Cite V1 B2.1 Layout HIT TOP HIERARCHY LEVEL SCHEMATIC	1:1
7	14596	29.04.2004	No!	USER	Merk		
6	14205	20.04.2004	No!	APPR'D			
5	13570	26.03.2004	Me	MP UC RD ED Ulm			
4	13452	22.03.2004	Me	Siemens AG	68290	sheet6	
3	13340	17.03.2004	No!				
2	13223	12.03.2004	No!				
VERS.	CHANGE NUMBER	DATE	NAME	(Created by BOM number: A5B00900146312-13427)			





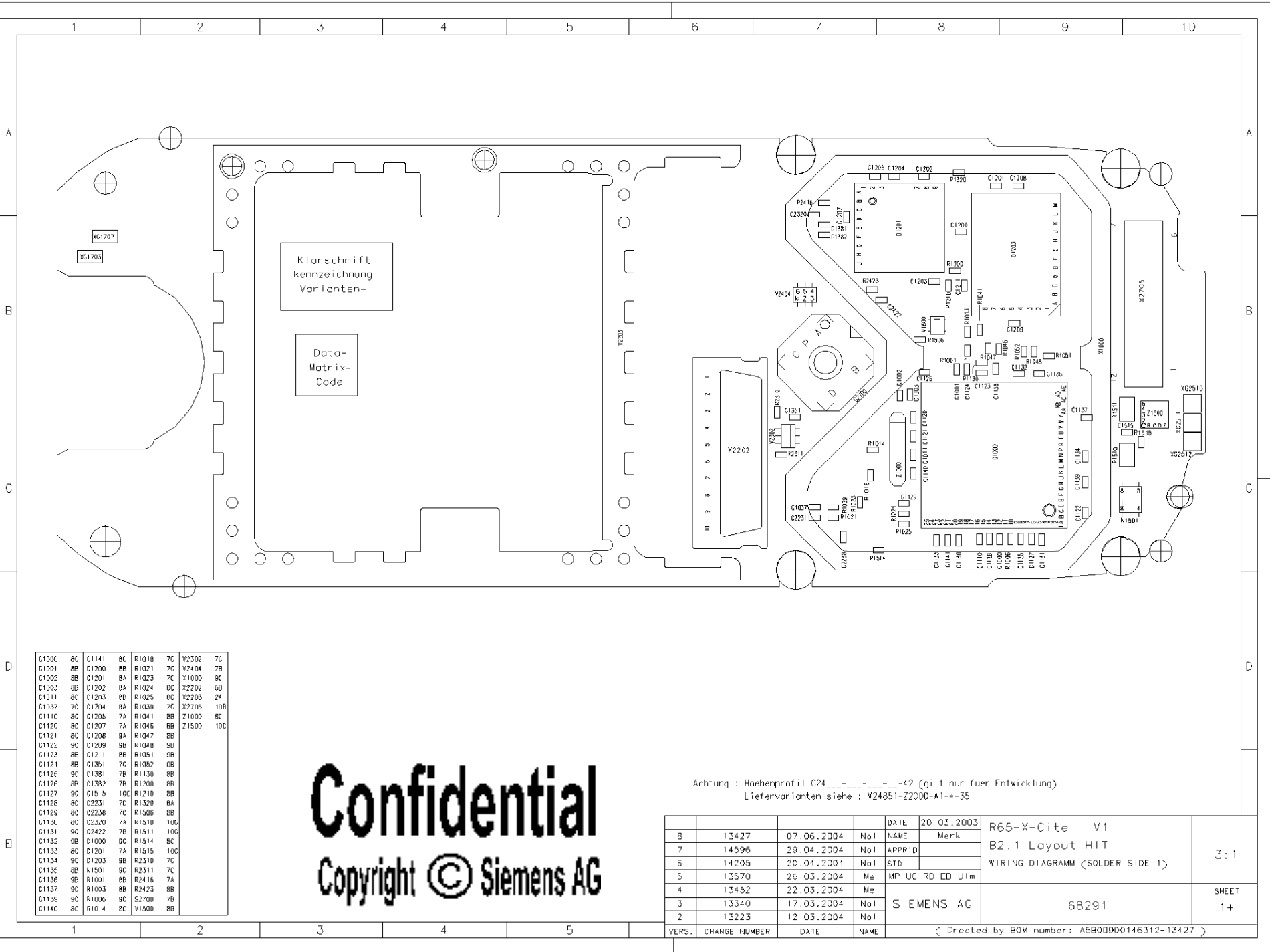
Confidential
Copyright © Siemens AG

			DATE		20.03.2003		R65-X-Cite V1 B2.1 Layout HIT TOP HIERARCHY LEVEL SCHEMATIC	1:1
8	13427	07.06.2004	NoI	USER	Merk			
7	14596	29.04.2004	NoI	APPR'D				
6	14205	20.04.2004	NoI					
5	13570	26.03.2004	Me	MP UC RD ED Ulm				
4	13452	22.03.2004	Me	Siemens AG				
3	13340	17.03.2004	NoI					
2	13223	12.03.2004	NoI				68290	sheet9
VERS.	CHANGE	NUMBER	DATE	NAME	(Created by BOM number: A5B00900146312-13427)			



Confidential
Copyright © Siemens AG

				DATE	20.03.2003	R65-X-Cite V1 B2.1 Layout HIT TOP HIERARCHY LEVEL SCHEMATIC	1:1
8	13427	07.06.2004	Nol	USER	Merk		
7	14596	29.04.2004	Nol	APPR'D			
6	14205	20.04.2004	Nol				
5	13570	26.03.2004	Me	MP UC RD ED Ulm			
4	13452	22.03.2004	Me	Siemens AG		68290	sheet10
3	13340	17.03.2004	Nol				
2	13223	12.03.2004	Nol				
VERS.	CHANGE NUMBER	DATE	NAME	(Created by BOM number: A5B00900146312-13427)			



C1000	8C	C1141	8C	R1018	7C	Y2302	7C
C1001	8B	C1200	8B	R1021	7C	Y2404	7B
C1002	8B	C1201	8A	R1023	7C	Y1000	9C
C1003	8B	C1202	8A	R1024	8C	X2202	6B
C1011	8C	C1203	8B	R1025	8C	X2203	2A
C1037	7C	C1204	8A	R1038	7C	X2705	10B
C1110	8C	C1205	7A	R1041	8B	Z1000	8C
C1120	8C	C1207	7A	R1046	8B	Z1500	10C
C1121	8C	C1208	9A	R1047	8B		
C1122	9C	C1209	9B	R1048	9B		
C1123	8B	C1211	8B	R1051	9B		
C1124	8B	C1351	7C	R1052	9B		
C1126	9C	C1381	7B	R1130	8B		
C1126	8B	C1382	7B	R1200	8B		
C1127	9C	C1515	10C	R1210	8B		
C1128	8C	C2231	7C	R1320	8A		
C1129	8C	C2238	7C	R1508	8B		
C1130	8C	C2320	7A	R1010	10C		
C1131	9C	C2422	7B	R1511	10C		
C1132	9B	D1000	8C	R1514	8C		
C1133	8C	D1201	7A	R1515	10C		
C1134	9C	D1203	9B	R2310	7C		
C1136	8B	N1501	8C	R2311	7C		
C1136	9B	R1001	8B	R2416	7A		
C1137	9C	R1003	8B	R2423	8B		
C1139	8C	R1006	9C	S2700	7B		
C1140	8C	R1014	8C	V1500	8B		

Confidential
Copyright © Siemens AG

Achtung : Höhenprofil C24_...-...-42 (gilt nur fuer Entwicklung)
Liefervarianten siehe : V24851-Z2000-A1--35

VERS.	CHANGE NUMBER	DATE	NAME	DATE	20.03.2003	R65-X-Cite V1 B2.1 Layout HIT WIRING DIAGRAM (SOLDER SIDE 1)	3:1
8	13427	07.06.2004	NoI	NAME	Merk		
7	14596	29.04.2004	NoI	APPR'D			
6	14205	20.04.2004	NoI	STD			
5	13570	26.03.2004	Me	MP UC RD ED U1m			
4	13452	22.03.2004	Me				
3	13340	17.03.2004	NoI	SIEMENS AG		68291	SHEET 1+
2	13223	12.03.2004	NoI				

(Created by BOM number: A5B00900146312-13427)

PROPRIETARY DATA - COMPANY CONFIDENTIAL
ALL RIGHTS RESERVED

ALS BETRIEBSGEHEIMNIS ANVERTRAUT
ALLE RECHTE VORBEHALTEN

C1301	4B	C1329	4A	C1514	2B	C3611	9B	C3948	6C	L1316	5B	R1341	2B	R3601	8C	R3925	6B	X1504	1C
C1302	3B	C1330	3A	C1601	2C	C3612	9B	C3949	6B	L1320	5B	R1342	2B	R3604	5C	R3926	7C	X1604	2C
C1303	3B	C1332	4A	C1602	2C	C3601	7B	C3961	1C	L1331	3A	R1343	3A	R3605	5C	R3927	7C	X1700	10C
C1304	3B	C1333	4B	C1605	2C	C3602	7B	C3963	7C	L2633	3C	R1344	5A	R3606	5C	R3930	7C	X1551	8B
C1305	5B	C1334	4A	C1606	2C	C3604	7B	C3965	6C	L3903	10A	R1353	4A	R3607	5C	R3963	6C	X3552	5B
C1306	3B	C1335	5B	C2100	7C	C3605	7B	C3966	6C	L3805	10B	R1390	3B	R3608	5C	R3964	6C	X3553	7C
C1307	3B	C1336	3B	C2233	5C	C3606	7B	C3973	6B	L3811	9B	R1500	2B	R3609	5C	R3965	6C	X3600	8B
C1308	3B	C1337	4A	C2235	5C	C3607	7B	C3982	6B	L3901	7B	R1501	2B	R3610	8C	R3966	6C	X3600	9B
C1309	4A	C1338	3B	C2236	5C	C3620	7C	C3983	6B	L3902	7B	R1502	2B	R3611	6C	R3967	6C	X3301	7C
C1310	4A	C1339	4B	C2237	6C	C3621	7C	C3984	6B	L3921	6C	R1503	2B	R3612	5C	R3981	6B	Z3961	7C
C1311	4B	C1340	5B	C2651	4C	C3622	7C	C3986	6B	L3922	6C	R1504	2B	R3613	6C	R3982	5B		
C1312	4B	C1341	4B	C2653	3C	C3623	7C	C3987	5B	L3923	7C	R1508	2B	R3614	5C	R3983	5B		
C1313	4B	C1342	4B	C3600	5C	C3624	7C	C3988	6A	L3980	6B	R1509	1C	R3615	8C	V1302	3B		
C1314	4B	C1344	7A	C3601	6C	C3625	7C	C3989	6B	L3981	6B	R1524	2B	R3616	6C	V1303	3B		
C1315	5B	C1345	5A	C3602	5C	C3626	7C	C3990	6B	L3982	6B	R1525	2B	R3617	8C	V1304	2A		
C1316	4B	C1346	2B	C3603	5C	C3627	7B	C3991	5B	N3600	8C	R1613	2C	R3623	1C	V1305	5A		
C1317	5B	C1352	2B	C3606	8C	C3628	7B	C3992	6B	N3901	7B	R1614	2C	R3625	5C	V1364	4A		
C1318	5B	C1354	3B	C3606	7C	C3629	7B	C3993	6B	N3921	7B	R1902	2A	R3626	5C	V1400	5A		
C1319	5B	C1355	3B	C3607	7C	C3630	7C	C3994	6B	N3981	5B	R1926	2B	R3627	6C	V1605	2C		
C1320	5B	C1356	3B	C3608	8C	C3631	7B	C3995	6B	R1022	6A	R1927	2B	R3633	6C	V2100	1C		
C1321	5B	C1357	3A	C3609	8C	C3632	6C	C3996	6B	R1300	4B	R2421	9C	R3635	5C	V2303	3A		
C1322	5B	C1358	2B	C3610	5C	C3633	6B	C3997	6A	R1202	3B	R2422	9A	R3801	10B	V2650	4C		
C1323	5B	C1363	4A	C3611	7C	C3634	6B	L1300	4B	R1303	5A	R2633	3C	R3802	7C	V2808	10C		
C1324	5B	C1401	6A	C3618	6B	C3635	6B	C3601	5C	R1306	4B	R2728	2A	R3911	6B	V2809	9A		
C1325	5B	C1402	6A	C3602	10A	C3637	6C	L1300	3B	R1309	2A	R2871	2A	R3920	6B	V2821	2A		
C1326	4A	C1364	1C	C3603	10A	C3638	6C	L1301	3B	R1313	3B	R2872	2A	R3922	7C	V3961	6C		
C1327	4A	C1507	1C	C3604	10A	C3639	7C	L1302	3B	R1328	2B	R2873	2A	R3923	7C	V1300	4B		
C1328	5A	C1513	1B	C3605	10B	C3940	7C	L1303	5A	R1340	2B	R3600	8C	R3924	7C	X1400	6A		

Confidential
Copyright © Siemens AG

Achtung : Höhenprofil C24_...-42 (gilt nur fuer Entwicklung)
Liefervarianten siehe : V24851-Z2000-A1--35

				DATE	20.03.2003	R65-X-Cite V1	
8	13427	07.06.2004	No!	NAME	Merk	B2.1 Layout HIT	
7	14596	29.04.2004	No!	APPR'D		WIRING DIAGRAM (SOLDER SIDE 2)	3:1
6	14205	20.04.2004	No!	STD			
5	13570	26.03.2004	Me	MP UC RD ED U1m			
4	13452	22.03.2004	Me				
3	13340	17.03.2004	No!	SIEMENS AG		68291	SHEET 2+
2	13223	12.03.2004	No!				
VERS. CHANGE NUMBER				DATE	NAME	(Created by BOM number: A5B00900146312-13427)	



Achtung : Höhenprofil C24____-____-____-42 (gilt nur fuer Entwicklung)
Liefervarianten siehe : V24851-Z2000-A1-*--35

				DATE	20_03_2003	R65-X-Cite V1 B2.1 Layout HIT WIRING DIAGRAM (SOLDER SIDE 1)	3:1
8	13427	07.06.2004	No1	NAME	Merck		
7	14596	29.04.2004	No1	APPR'D			
6	14205	20.04.2004	No1	STD			
5	13570	26.03.2004	Me	MP UC RD ED U1m			
4	13452	22.03.2004	Me				
3	13340	17.03.2004	No1	SIEMENS AG		68291	SHEET
2	13223	12.03.2004	No1				3+
(Created by BOM number: A5B00900146312-13427)							
VERS.	CHANGE NUMBER	DATE	NAME				

PROPRIETARY DATA - COMPANY CONFIDENTIAL
ALL RIGHTS RESERVED

ALS BETRIEBSGHEIMNIS ANVERTRAUT
ALLE RECHTE VORBEHALTEN

C1301	4B	C1329	4A	C1514	2B	C3611	9B	C3948	6C	L1316	5B	R1341	2B	R3601	8C	R3925	6B	X1504	1C
C1302	3B	C1330	3A	C1601	2C	C3612	9B	C3949	6B	L1320	5B	R1342	2B	R3604	5C	R3926	7C	X1604	2C
C1303	3B	C1332	4A	C1602	2C	C3601	7B	C3961	1C	L1331	3A	R1343	3A	R3605	5C	R3927	7C	X1700	10C
C1304	3B	C1333	4B	C1605	2C	C3602	7B	C3963	7C	L2633	3C	R1344	5A	R3606	5C	R3930	7C	X3551	8B
C1305	5B	C1334	4A	C1606	2C	C3604	7B	C3965	6C	L3803	10A	R1353	4A	R3607	5C	R3963	6C	X3552	5B
C1306	3B	C1335	5B	C1607	2C	C3605	7B	C3966	6C	L3805	10B	R1360	3B	R3608	5C	R3964	6C	X3553	7C
C1307	3B	C1336	3B	C2233	5C	C3606	7B	C3973	6B	L3811	9B	R1500	2B	R3609	5C	R3965	6C	X3600	8C
C1308	3B	C1337	4A	C2235	5C	C3607	7B	C3982	6B	L3901	7B	R1501	2B	R3610	8C	R3966	6C	X3600	9C
C1309	4A	C1338	3B	C2236	5C	C3620	7C	C3983	6B	L3902	7B	R1502	2B	R3611	6C	R3967	6C	X3301	7C
C1310	4A	C1339	4B	C2237	6C	C3921	7C	C3984	5B	L3921	6C	R1503	2B	R3612	5C	R3981	6B	Z3961	7C
C1311	4B	C1340	5B	C2651	4C	C3922	7C	C3986	6B	L3922	6C	R1504	2B	R3613	6C	R3982	5B		
C1312	4B	C1341	4B	C2653	3C	C3923	7C	C3987	5B	L3923	7C	R1508	2B	R3614	5C	R3983	5B		
C1313	4B	C1342	4B	C3600	5C	C3924	7C	C3988	6A	L3980	6B	R1509	1C	R3615	8C	V1302	3B		
C1314	4B	C1344	7A	C3601	6C	C3925	7C	C3989	6B	L3981	6B	R1524	2B	R3616	6C	V1303	3B		
C1315	5B	C1345	5A	C3602	5C	C3926	7C	C3990	6B	L3982	6B	R1525	2B	R3617	8C	V1304	2A		
C1316	4B	C1346	2B	C3603	5C	C3927	7B	C3991	5B	N3600	8C	R1613	2C	R3623	6C	V1305	6A		
C1317	5B	C1352	2B	C3606	8C	C3928	7B	C3992	6B	N3901	7B	R1614	2C	R3625	5C	V1364	4A		
C1318	5B	C1354	3B	C3606	7C	C3929	7B	C3993	6B	N3921	7B	R1902	2A	R3626	5C	V1400	5A		
C1319	5B	C1355	3B	C3607	7C	C3930	7C	C3994	6B	N3981	6B	R1926	2B	R3627	6C	V1605	2C		
C1320	5B	C1356	3B	C3608	8C	C3931	7B	C3995	6B	R1022	6A	R1927	2B	R3633	6C	V2100	1C		
C1321	5B	C1357	3A	C3609	8C	C3932	6C	C3996	6B	R1300	4B	R2421	9C	R3635	5C	V2303	3A		
C1322	5B	C1358	2B	C3610	5C	C3933	6B	C3997	6A	R1202	3B	R2422	9A	R3801	10B	V2650	4C		
C1323	5B	C1363	4A	C3611	7C	C3934	6B	L1300	4B	R1303	5A	R2633	3C	R3802	7C	V2808	10C		
C1324	5B	C1401	6A	C3618	6C	C3935	6B	C3601	5C	R1306	4B	R2728	2A	R3911	6B	V2809	9A		
C1325	5B	C1402	6A	C3802	10A	C3937	6C	L1300	3B	R1309	2A	R2871	2A	R3920	6B	V2821	2A		
C1326	4A	C1504	1C	C3803	10A	C3938	6C	L1301	3B	R1313	3B	R2872	2A	R3922	7C	V3961	6C		
C1327	4A	C1507	1C	C3804	10A	C3939	7C	L1302	3B	R1328	2B	R2873	2A	R3923	7C	V1300	4B		
C1328	5A	C1513	1B	C3805	10B	C3940	7C	L1303	5A	R1340	2B	R3600	8C	R3924	7C	X1400	6A		

Confidential
Copyright © Siemens AG

Achtung : Höhenprofil C24_-----42 (gilt nur fuer Entwicklung)
Liefervarianten siehe : V24851-Z2000-A1--35

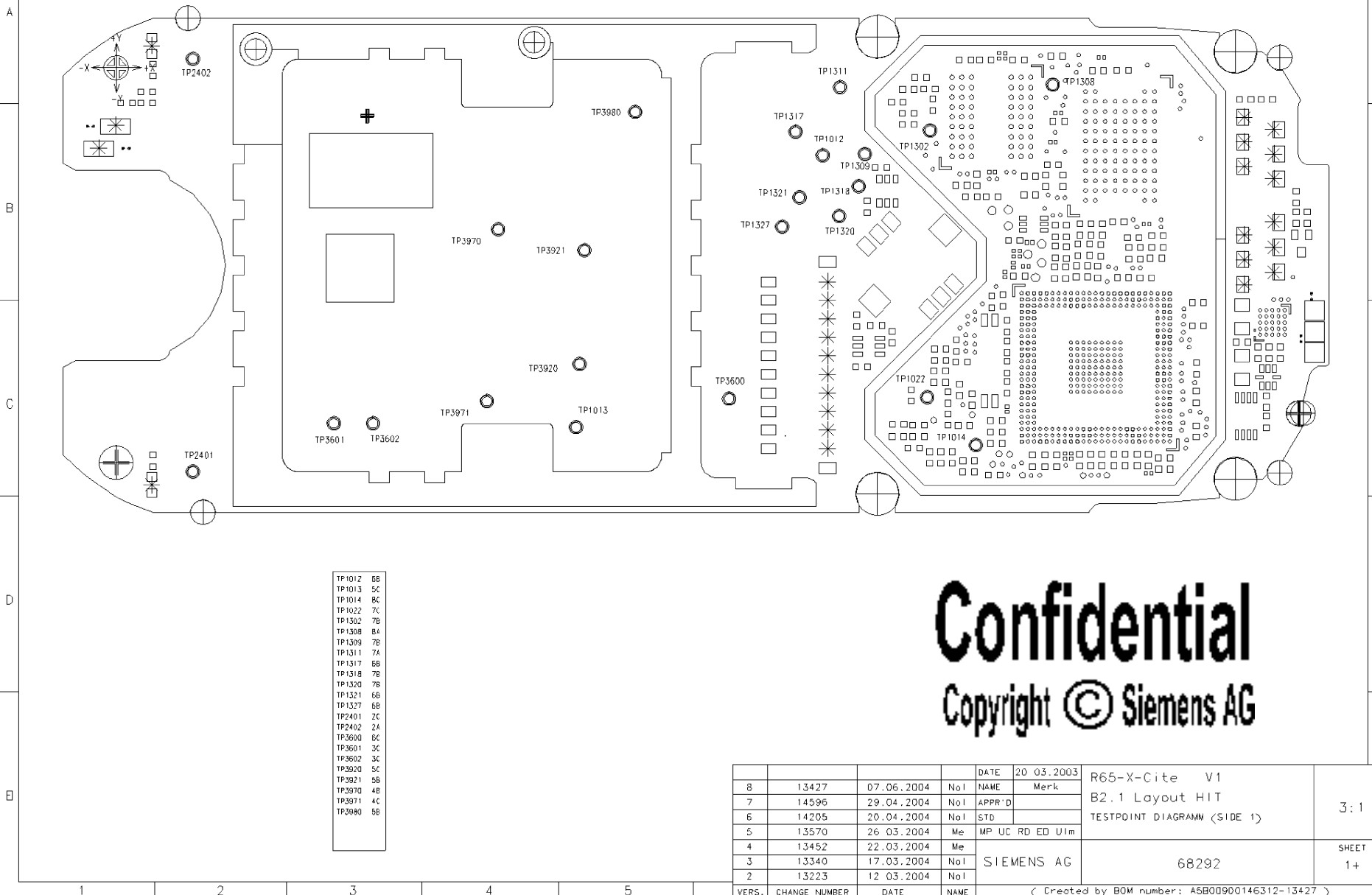
			DATE	20.03.2003	R65-X-Cite V1	
8	13427	07.06.2004	No!	NAME	Merk	
7	14596	29.04.2004	No!	APPR'D		
6	14205	20.04.2004	No!	STD		
5	13570	26.03.2004	Me	MP UC RD ED U1m		
4	13452	22.03.2004	Me			
3	13340	17.03.2004	No!	SIEMENS AG		
2	13223	12.03.2004	No!			
VERS. CHANGE NUMBER		DATE	NAME	(Created by BOM number: A5B00900146312-13427)		

B2.1 Layout HIT	3:1
WIRING DIAGRAM (SOLDER SIDE 2)	
68291	SHEET 4-

PROPRIETARY DATA - COMPANY CONFIDENTIAL
ALL RIGHTS RESERVED

ALS BETRIEBSGEHEIMNIS ANVERTRAUT
ALLE RECHTE VORBEHALTEN

1 2 3 4 5 6 7 8 9 10



TP1012	6B
TP1013	5C
TP1014	8C
TP1022	7C
TP1302	7B
TP1308	8A
TP1309	7B
TP1311	7A
TP1317	6B
TP1318	7B
TP1320	7B
TP1321	6B
TP1327	6B
TP2401	2C
TP2402	2A
TP3600	6C
TP3601	3C
TP3602	3C
TP3920	5C
TP3921	5B
TP3970	4B
TP3971	4C
TP3980	5B

Confidential
Copyright © Siemens AG

				DATE	20.03.2003	R65-X-Cite V1	
8	13427	07.06.2004	NoI	NAME	Merk	B2.1 Layout HIT	
7	14596	29.04.2004	NoI	APPR'D		TESTPOINT DIAGRAM (SIDE 1)	3:1
6	14205	20.04.2004	NoI	STD			
5	13570	26.03.2004	Me	MP UC RD ED U1m			
4	13452	22.03.2004	Me				
3	13340	17.03.2004	NoI	SIEMENS AG		68292	SHEET 1+
2	13223	12.03.2004	NoI				
VERS.	CHANGE NUMBER	DATE	NAME	(Created by BOM number: A5B00900146312-13427)			

PROPRIETARY DATA - COMPANY CONFIDENTIAL
ALL RIGHTS RESERVED

ALS BETRIEBSGEHEIMNIS ANVERTRAUT
ALLE RECHTE VORBEHALTEN

1 2 3 4 5 6 7 8 9 10

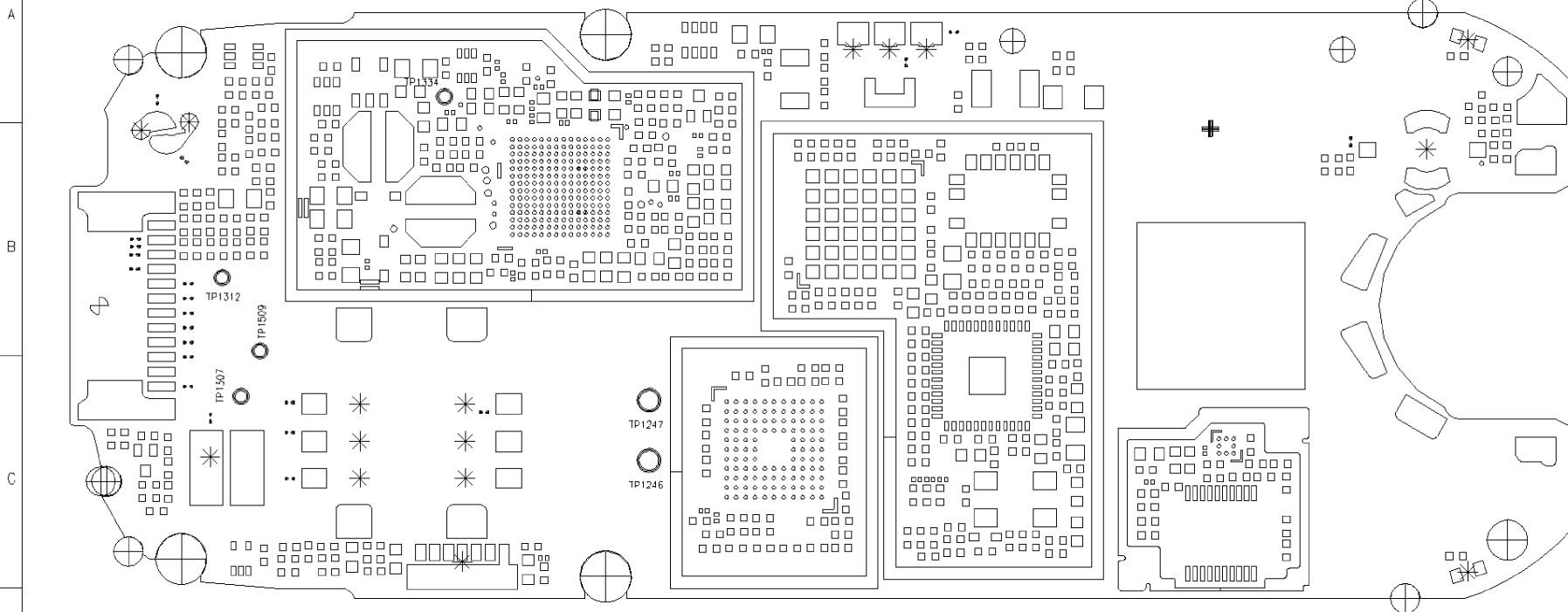
A

B

C

D

E



TP1246 4C
TP1247 4C
TP1307 2C
TP1312 2B
TP1334 3A
TP1509 2B

Confidential
Copyright © Siemens AG

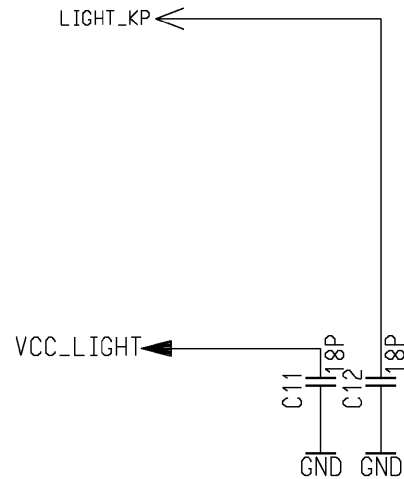
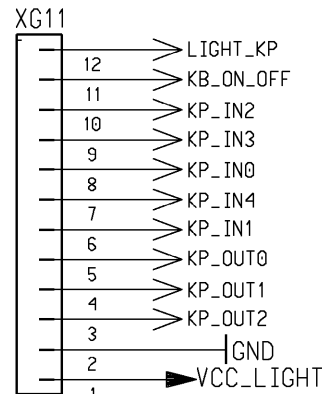
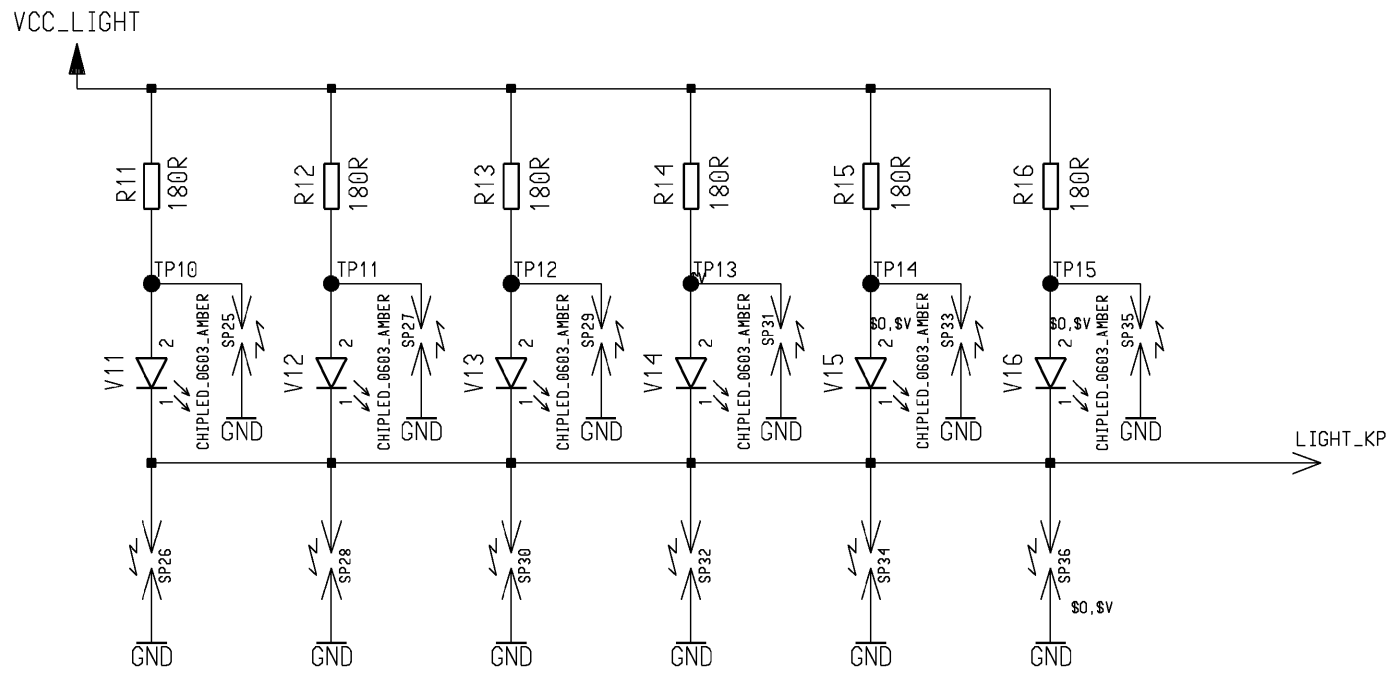
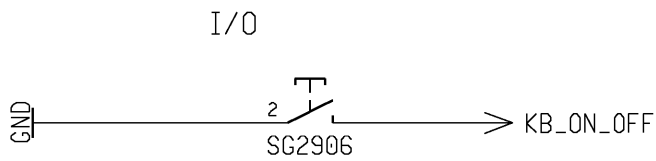
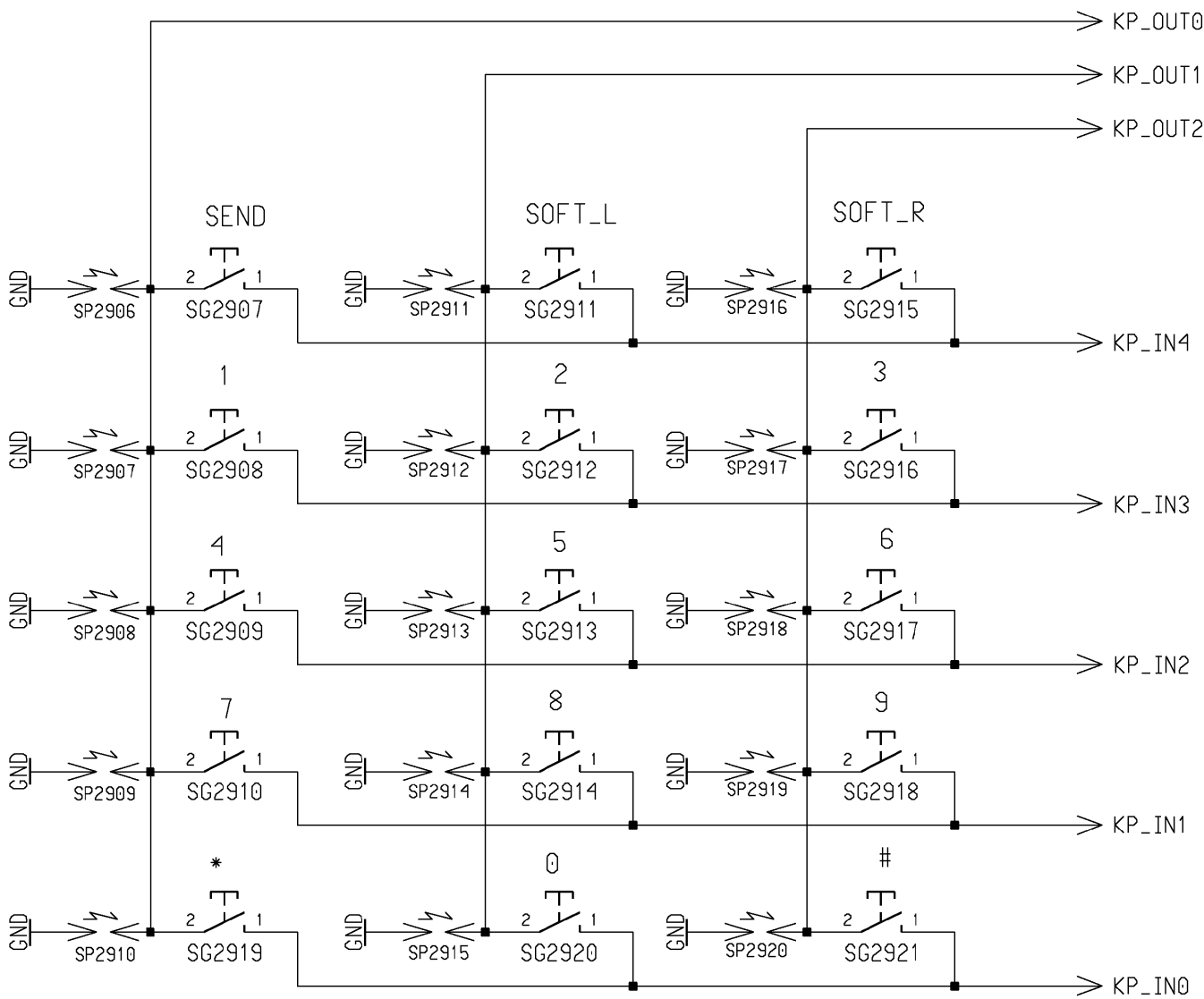
				DATE	20.03.2003	R65-X-Cite V1 B2.1 Layout HIT TESTPOINT DIAGRAM (SIDE 2)	3:1
8	13427	07.06.2004	NoI	NAME	Merk		
7	14596	29.04.2004	NoI	APPR'D			
6	14205	20.04.2004	NoI	STD			
5	13570	26.03.2004	Me	MP UC RD ED UIm			
4	13452	22.03.2004	Me				
3	13340	17.03.2004	NoI	SIEMENS AG		68292	SHEET 2-
2	13223	12.03.2004	NoI				
VERS. CHANGE NUMBER		DATE	NAME	(Created by BOM number: A5B00900146312-13427)			

1		2		3		4		5	
HIERARCHY					SHEET		SAP-ORIGINAL		
A5B00900142717-12085					index		index_ps.tif		
					netlist1		schematic_1_ps.tif		
					poslist1		schematic_2_ps.tif		
					page1		void		
					sheet1		schematic_3_ps.tif		
<div>Confidential</div> <div>Copyright © Siemens AG</div>									
				DATE	08.12.2003		MMI R65 X-Cite/2Layer variant 1 TOP HIERARCHY LEVEL SCHEMATIC		1:1
				USER	Jaeschke				
				APPR'D					
				MP UC RD ED ULM					
				Siemens AG		60021		index	
2	12086	04.02.2004	jae						
1	10215	08.12.2003	jae						
VERS.	CHANGE NUMBER	DATE	NAME	(Created by BOM number: A5B00900137790-12086)					

Proprietary data, company confidential.
All rights reserved

Als Betriebsgeheimnis anvertraut
Alle Rechte vorbehalten

SAP-Ident: 60021 / BOM / 000 / 02 Created/Changed: JAESCHKE_K, 2004-02-04



Confidential
Copyright © Siemens AG

				DATE	08.12.2003	MMI R65 X-Cite/2Layer variant 1 TOP HIERARCHY LEVEL SCHEMATIC	1:1
				USER	Jaeschke		
				APPR'D			
				MP UC RD ED ULM		Siemens AG	60021
2	12086	04.02.2004	jae				
1	10215	08.12.2003	jae				
VERS.	CHANGE NUMBER	DATE	NAME	(Created by BOM number: A5B00900137790-12086)			

1	2	3	4	5				
<div>C11 /sheet1 8 D C12 /sheet1 9 D R11 /sheet1 6 A R12 /sheet1 7 B R13 /sheet1 7 B R14 /sheet1 8 B R15 /sheet1 9 B R16 /sheet1 9 B TP10 /sheet1 6 B TP12 /sheet1 7 B TP13 /sheet1 8 B TP14 /sheet1 9 B TP15 /sheet1 9 B TP11 /sheet1 7 B V11 /sheet1 6 B V12 /sheet1 7 B V13 /sheet1 7 B V14 /sheet1 8 B V15 /sheet1 9 B V16 /sheet1 9 B</div>					A			
					B			
					C			
					D			
<div>Confidential Copyright © Siemens AG</div>					E			
				DATE	08.12.2003	MMI R65 X-Cite/2Layer variant 1 TOP HIERARCHY LEVEL SCHEMATIC	1:1	
				USER	Jaeschke			
				APPR'D				
				MP UC RD ED ULM		Siemens AG	60021	poslist1
2	12086	04.02.2004	jae					
1	10215	08.12.2003	jae					
VERS.	CHANGE NUMBER	DATE	NAME	(Created by BOM number: A5B00900137790-12086)				

Confidential
Copyright © Siemens AG

KB_ON_OFF
/sheet1 4 E
/sheet1 7 C

KP_IN0
/sheet1 5 D
/sheet1 7 C

KP_IN1
/sheet1 5 C
/sheet1 7 C

KP_IN2
/sheet1 5 C
/sheet1 7 C

KP_IN3
/sheet1 5 C
/sheet1 7 C

KP_IN4
/sheet1 5 B
/sheet1 7 C

KP_OUT0
/sheet1 5 A
/sheet1 7 D

KP_OUT1
/sheet1 5 A
/sheet1 7 D

KP_OUT2
/sheet1 7 D
/sheet1 5 B

LIGHT_KP
/sheet1 7 C
/sheet1 8 C
/sheet1 10 B

VCC_LIGHT
/sheet1 7 D
/sheet1 8 D
/sheet1 6 A

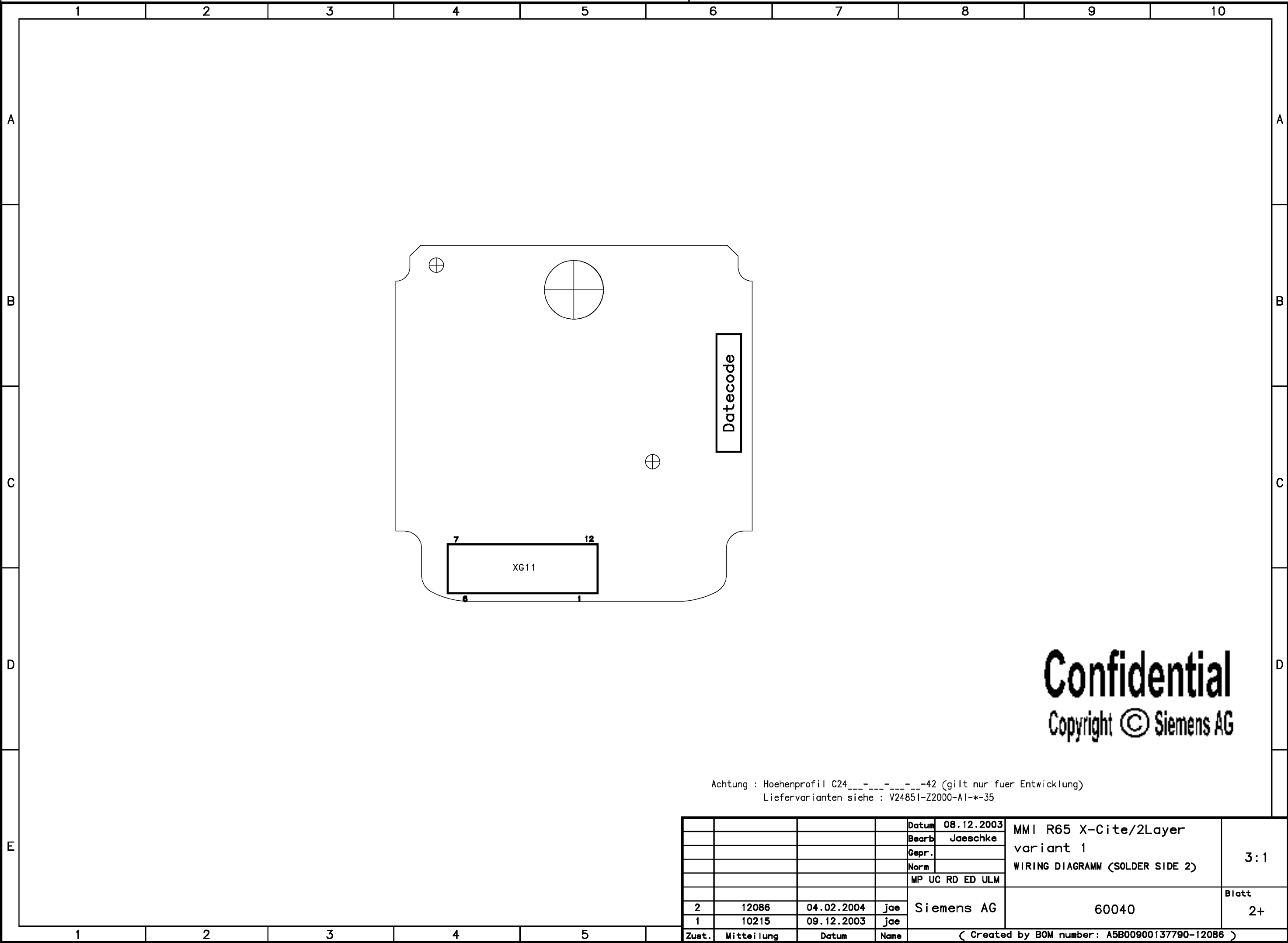
Confidential
Copyright © Siemens AG

				DATE	08.12.2003	MMI R65 X-Cite/2Layer variant 1 TOP HIERARCHY LEVEL SCHEMATIC	1:1
				USER	Jaeschke		
				APPR'D			
				MP UC RD ED ULM			
				Siemens AG		60021	netlist1
2	12086	04.02.2004	jae				
1	10215	08.12.2003	jae				
VERS.	CHANGE NUMBER	DATE	NAME	(Created by BOM number: A5B00900137790-12086)			

PROPRIETARY DATA, COMPANY CONFIDENTIAL
ALL RIGHTS RESERVED

ALS BETRIEBSGEHEIMNIS ANVERTRAUT
ALLE RECHTE VORBEHALTEN

SAP-Ident: 60040 / BOM / 000 / 02 Created/Changed: JÄESCHKE_K, 2004-02-04



Confidential
Copyright © Siemens AG

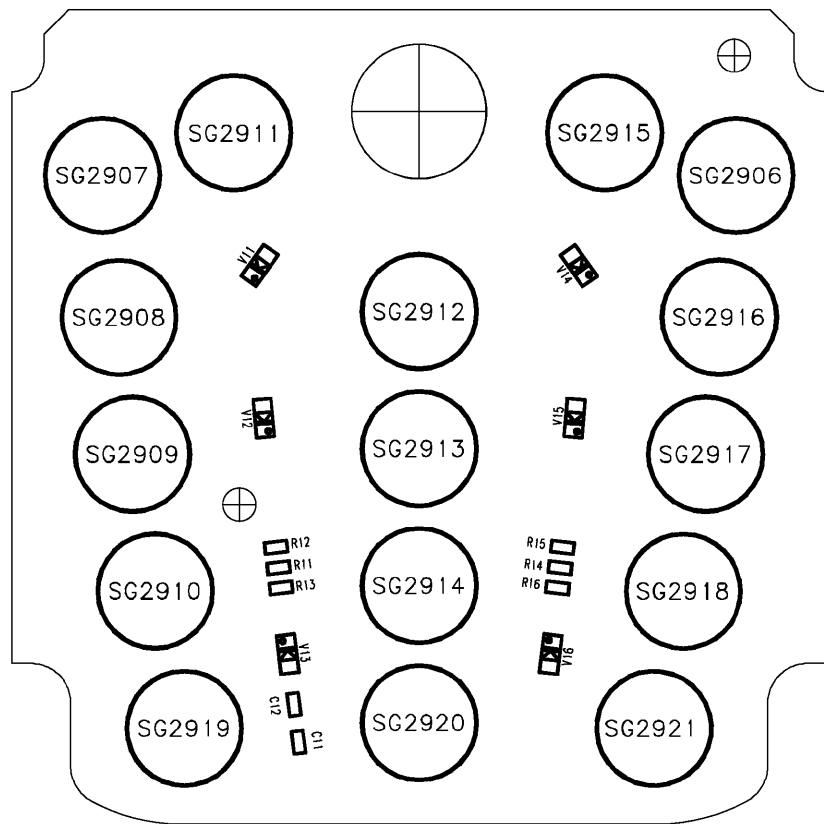
Achtung : Höhenprofil G24____-____-____-42 (gilt nur fuer Entwicklung)
Liefervarianten siehe : V24851-Z2000-A1-*-35

				Datum	08.12.2003	MMI R65 X-Cite/2Layer variant 1 WIRING DIAGRAMM (SOLDER SIDE 2)	3:1
				Bearb	Jaeschke		
				Gepr.			
				Norm			
				MP UC RD ED ULM			
				Siemens AG		60040	Blatt 2+
2	12086	04.02.2004	jae				
1	10215	09.12.2003	jae				
Zust.	Mitteilung	Datum	Name	(Created by BOM number: A5B00900137790-12086)			

PROPRIETARY DATA, COMPANY CONFIDENTIAL
ALL RIGHTS RESERVED

ALS BETRIEBSGEHEIMNIS ANVERTRAUT
ALLE RECHTE VORBEHALTEN

SAP-Ident: 60040 / BOM / 000 / 02 Created/Changed: JAE SCHKE_K, 2004-02-04

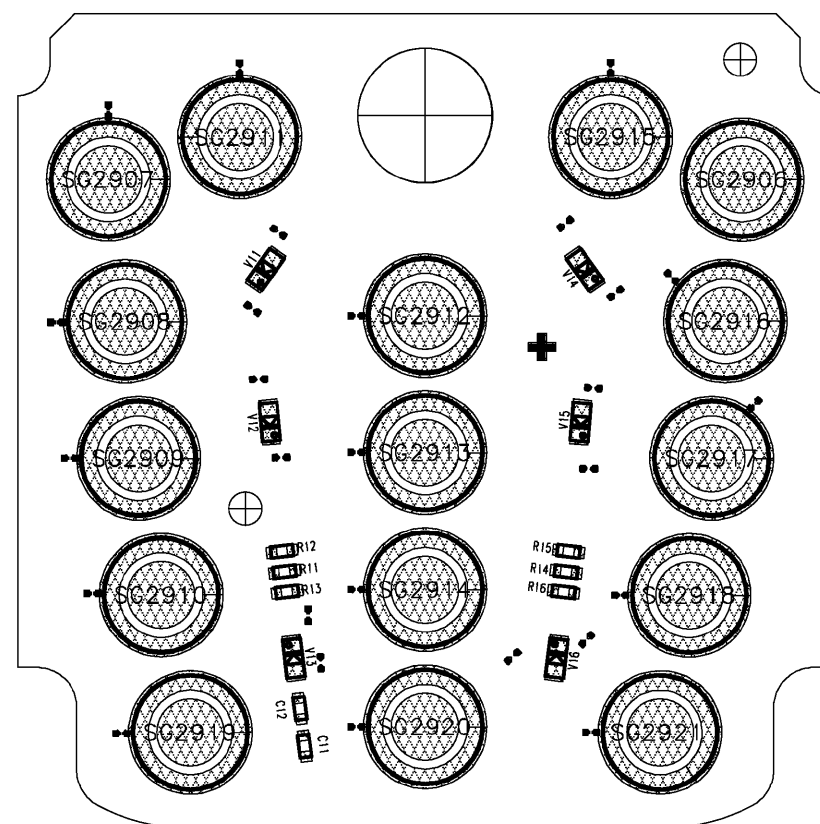


C11	4C
C12	4C
R11	4C
R12	4C
R13	4C
R14	5C
R15	5C
R16	5C
V11	4B
V12	4C
V13	4C
V14	5B
V15	5C
V16	5C

Confidential
Copyright © Siemens AG

Achtung : Höhenprofil G24____-____-____-42 (gilt nur fuer Entwicklung)
Liefervarianten siehe : V24851-Z2000-A1-*-35

				Datum	08.12.2003	MMI R65 X-Cite/2Layer variant 1 WIRING DIAGRAMM (SOLDER SIDE 1)	3:1
				Bearb	Jaeschke		
				Gepr.			
				Norm			
				MP UC RD ED ULM		Siemens AG	Blatt 1+
2	12086	04.02.2004	jae				
1	10215	09.12.2003	jae				
Zust.	Mitteilung	Datum	Name	(Created by BOM number: A5B00900137790-12086)			



C11	4C
C12	4C
R11	4C
R12	4C
R13	4C
R14	5C
R15	5C
R16	5C
V11	4B
V12	4C
V13	4C
V14	5B
V15	5C
V16	5C

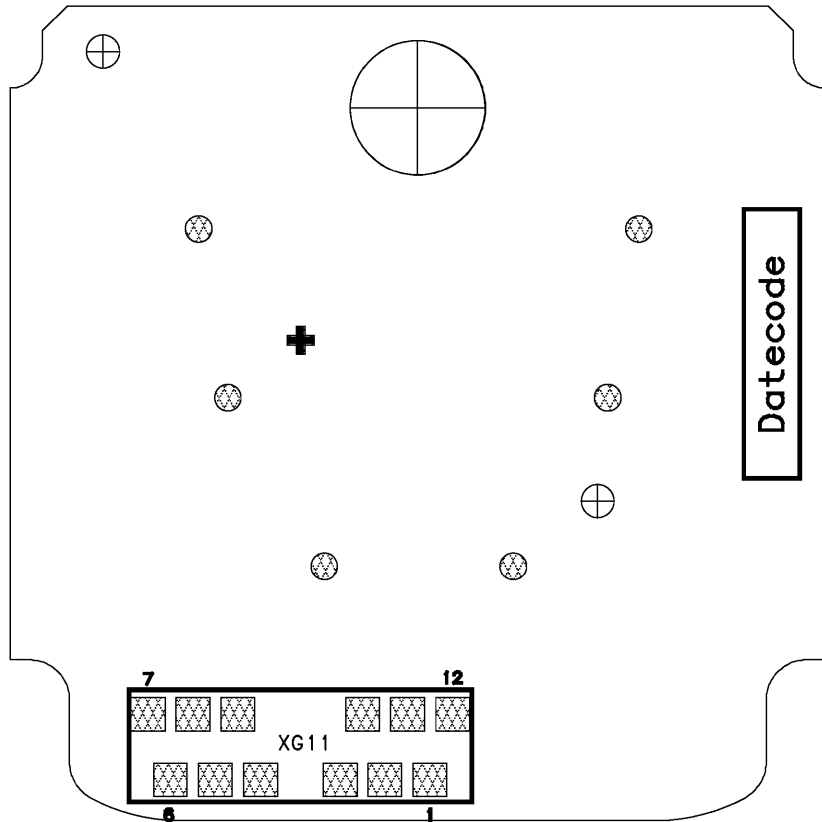
Confidential
Copyright © Siemens AG

Achtung : Höhenprofil C24___-___-___-42 (gilt nur fuer Entwicklung)
Liefervarianten siehe : V24851-Z2000-A1-*-35

				Datum	08.12.2003	MMI R65 X-Cite/2Layer variant 1 WIRING DIAGRAMM (SOLDER SIDE 1)	3:1
				Bearb.	Jaeschke		
				Gepr.			
				Norm			
				MP UC RD ED ULM			
				Siemens AG		60040	Blatt 3+
2	12086	04.02.2004	jae				
1	10215	09.12.2003	jae				
Zust.	Mitteilung	Datum	Name	(Created by BOM number: A5B00900137790-12086)			

PROPRIETARY DATA, COMPANY CONFIDENTIAL
ALL RIGHTS RESERVED

ALS BETRIEBSGEHEIMNIS ANVERTRAUT
ALLE RECHTE VORBEHALTEN



Confidential
Copyright © Siemens AG

Achtung : Höhenprofil G24____-____-____-42 (gilt nur fuer Entwicklung)
Liefervarianten siehe : V24851-Z2000-A1-*-35

				Datum	08.12.2003	MMI R65 X-Cite/2Layer variant 1 WIRING DIAGRAMM (SOLDER SIDE 2)	3:1
				Bearb	Jaeschke		
				Gepr.			
				Norm			
				MP UC RD ED ULM		Siemens AG	Blatt 4-
2	12086	04.02.2004	jae				
1	10215	09.12.2003	jae				
Zust.	Mitteilung	Datum	Name	(Created by BOM number: A5B00900137790-12086)			

PROPRIETARY DATA, COMPANY CONFIDENTIAL
ALL RIGHTS RESERVED

ALS BETRIEBSGEHEIMNIS ANVERTRAUT
ALLE RECHTE VORBEHALTEN

SAP-Ident: 60041 / BOM / 000 / 02 Created/Changed: JÄESCHKE_K, 2004-02-04

A

B

C

D

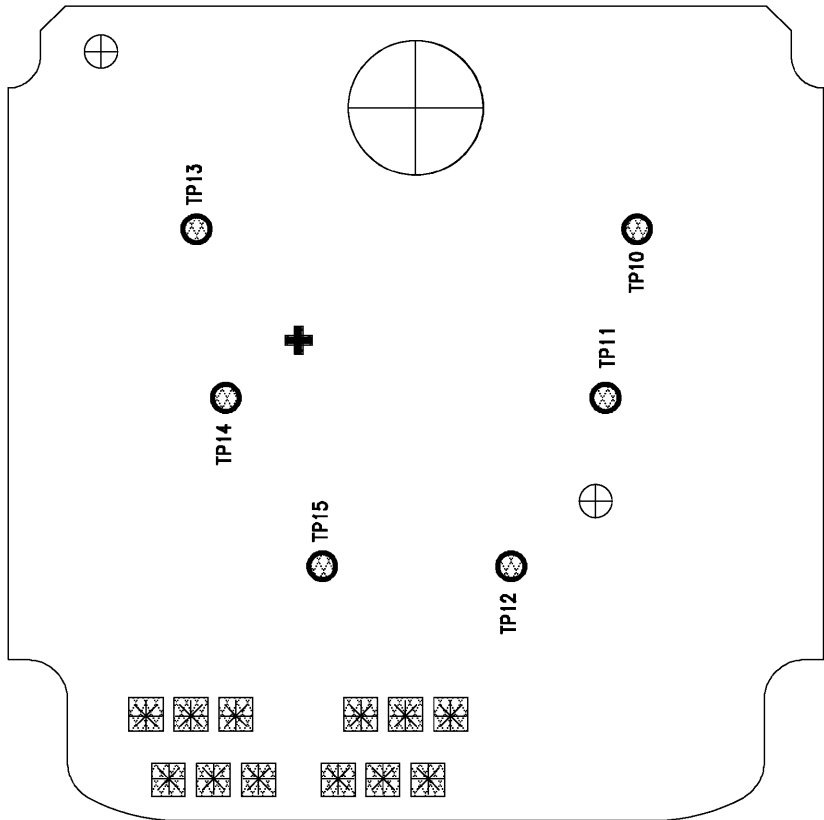
E

A

B

C

D



TP10	6B
TP11	6C
TP12	5C
TP13	4B
TP14	4C
TP15	5C

Confidential
Copyright © Siemens AG

				Datum	08.12.2003	MMI R65 X-Cite/2Layer variant 1 TESTPOINT DIAGRAMM (SIDE 2)	3:1
				Bearb	Jaeschke		
				Gepr.			
				Norm			
				MP UC RD ED ULM		Siemens AG	Blatt 2-
2	12086	04.02.2004	joe				
1	10215	09.12.2003	joe				
Zust.	Mitteilung	Datum	Name	(Created by BOM number: A5B00900137790-12086)			